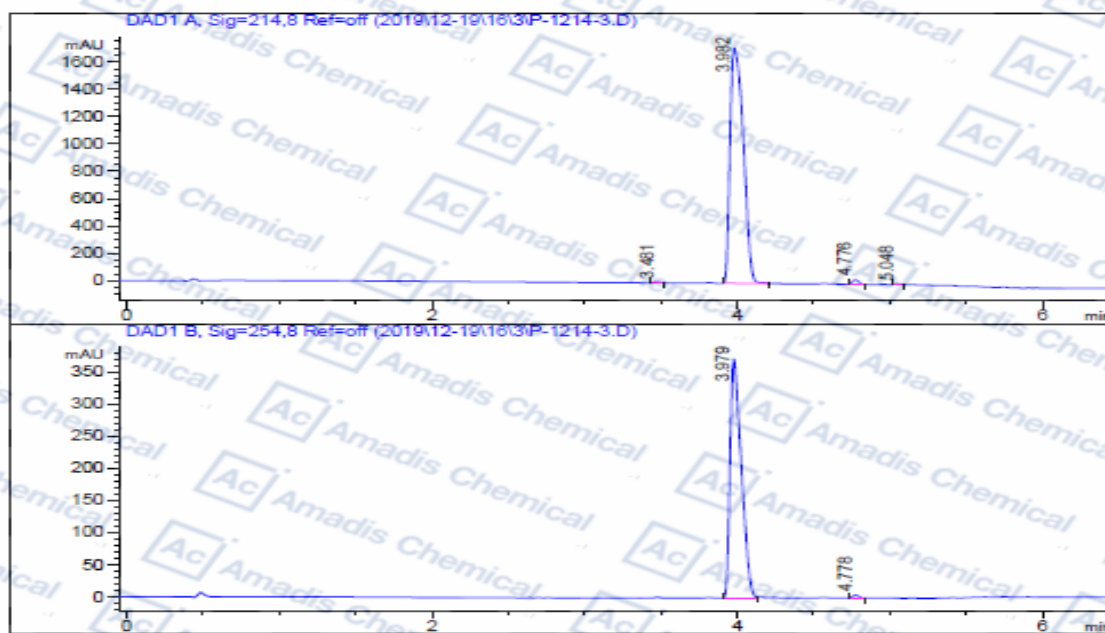


HPLC of 920509-32-6



Integration Results

Signal 1: DAD1 A, Sig=214,8 Ref=off

#	R.T.	Type	Height	Height%	Width	Area	Area %
1	3.481	MF	10.145	0.573	0.048	28.931	0.274
2	3.982	MF	1719.096	97.040	0.101	10402.486	98.672
3	4.776	MF	33.320	1.881	0.048	96.810	0.917
4	5.048	MF	8.974	0.507	0.046	24.966	0.237

Signal 2: DAD1 B, Sig=254,8 Ref=off

#	R.T.	Type	Height	Height%	Width	Area	Area %
1	3.979	MF	373.691	98.790	0.085	1903.137	99.269
2	4.778	MF	4.575	1.210	0.051	14.009	0.731

*** End of Report ***

*For R&D use only

*if you have any comments and suggestions, please contact us by sales@amadischem.com