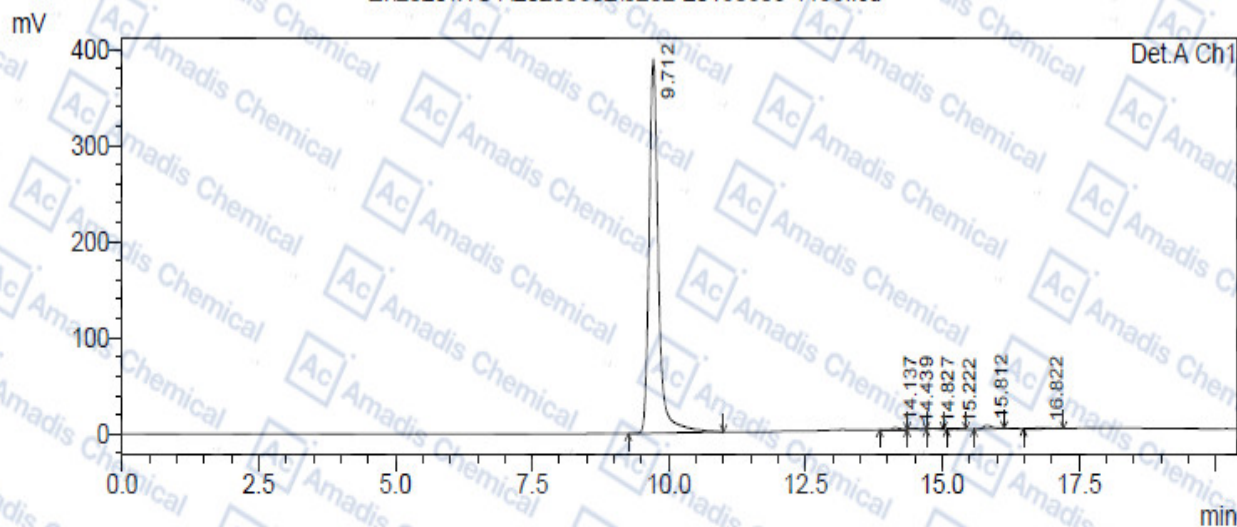


HPLC of 40045-50-9

<Chromatogram>

E:\2020\WSY\20200302\0202-20150603-1195.lcd



1 Det.A Ch1/210nm

Peak Table

Detector A Ch1 210nm

peak#	Ret. Time	Area	Height	Area %	Plate#	Tailing Factor	Resolution
1	9.712	4643467	389199	97.771	17343.070	1.307	0.000
2	14.137	24439	2225	0.515	59627.067	0.000	16.809
3	14.439	17039	1095	0.359	6611.860	0.000	0.641
4	14.827	8168	824	0.172	38742.973	0.000	0.767
5	15.222	1844	301	0.039	114529.357	1.157	1.640
6	15.812	42222	3796	0.889	44896.002	1.701	2.467
7	16.822	12132	748	0.255	30228.751	1.364	2.947
Total		4749311	398188	100.000			

*For R&D use only

*if you have any comments and suggestions, please contact us by sales@amadischem.com