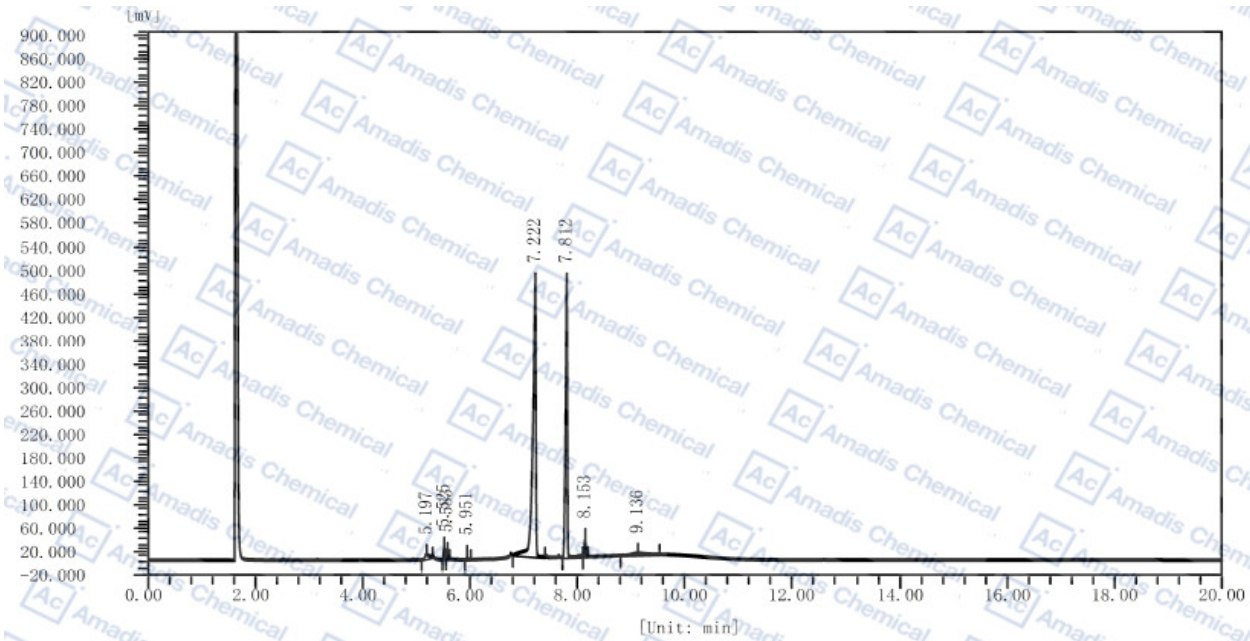


GC of 153737-25-8



分析结果

峰序	组分名	保留时间 [min]	半峰宽 [min]	峰高 [uV]	峰面积 [uV*s]	峰面积 [%]	含量 [%]	峰类型
1		5.197	0.128	6764.7	44742.2	1.3858	1.3858	BB
2		5.525	0.025	20441.3	32666.7	1.0118	1.0118	BB
3		5.583	0.025	11136.1	17580.3	0.5445	0.5445	BB
4		5.951	0.027	7311.1	12757.0	0.3951	0.3951	BB
5		7.222	0.054	467278.9	1826280.3	56.5653	56.5653	BB
6		7.812	0.040	468221.7	1191774.7	36.9128	36.9128	BB
7		8.153	0.025	31513.3	51632.6	1.5992	1.5992	BB
8		9.136	0.293	3010.5	51191.7	1.5856	1.5856	BB
总计:					1015677.5	3228625.5	100.0000	100.0000

*For R&D use only

*if you have any comments and suggestions, please contact us by sales@amadischem.com