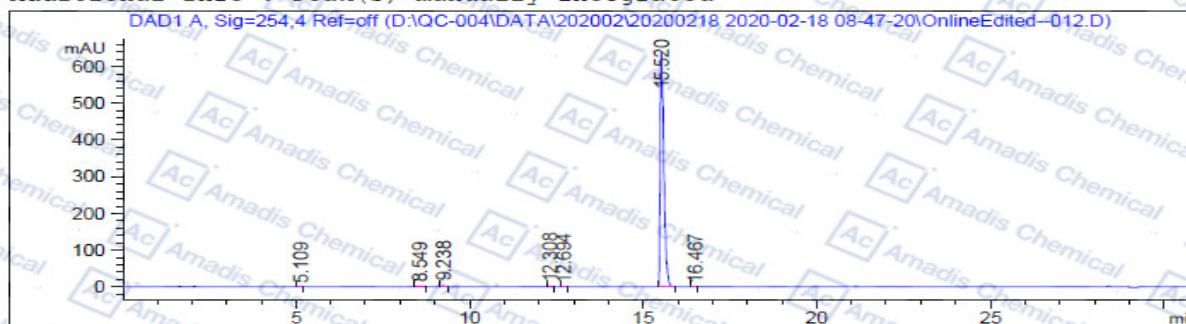


## HPLC of 1809249-37-3

Additional Info : Peak(s) manually integrated



### Area Percent Report

Sorted By : Signal  
Multiplier : 1.0000  
Dilution : 1.0000  
Use Multiplier & Dilution Factor with ISTDs

Signal 1: DAD1 A, Sig=254.4 Ref=off

Peak #	RetTime [min]	Type	Width [min]	Area [mAU*s]	Height [mAU]	Area %
1	5.109	BB	0.0733	1.66331	3.38927e-1	0.0348
2	8.549	BB	0.0991	10.10878	1.41920	0.2115
3	9.238	BB	0.0784	21.45510	4.14716	0.4488
4	12.308	BB	0.0735	4.51631	8.85315e-1	0.0945
5	12.694	BB	0.0621	1.75894	4.26342e-1	0.0368
6	15.520	BB	0.1182	4739.21680	641.79681	99.1426
7	16.467	BB	0.0601	1.48063	3.59083e-1	0.0310

Totals : 4780.19988 649.37285

\*For R&D use only

\*If you have any comments and suggestions, please contact us by [sales@amadischem.com](mailto:sales@amadischem.com)