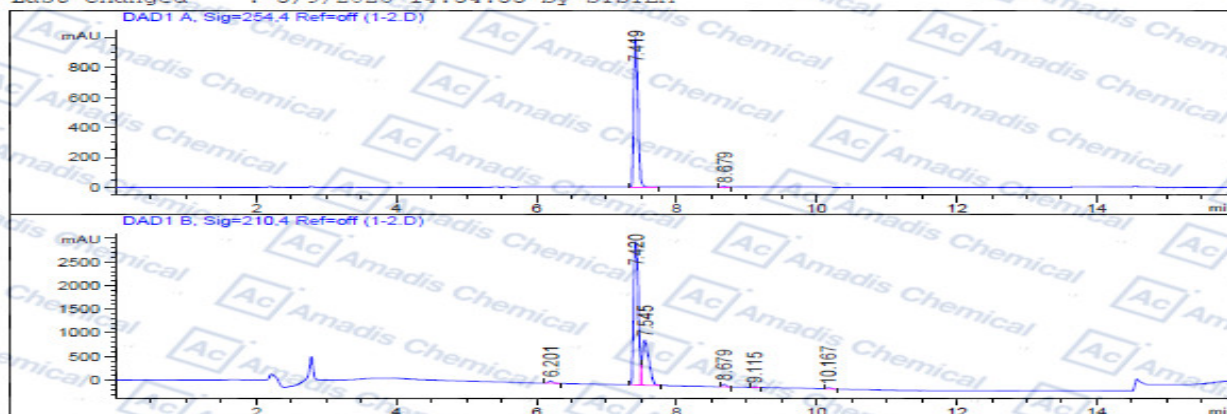


HPLC of 1418274-28-8

```

-----
Acq. Operator   : SYSTEM                               Seq. Line :    1
Sample Operator : SYSTEM                               Location  : F1-B-01
Acq. Instrument : HPLC                               Inj       :    1
Injection Date  : 4/7/2020 14:56:24                  Inj Volume: 2.000 µl
Different Inj Volume from Sample Entry! Actual Inj Volume : 10.000 µl
Sequence File   : D:\Data\2020\2020-04\24\04.S
Method          : D:\Data\2020\2020-04\24\10-80-254-210-AB.M (Sequence Method)
Last changed    : 3/9/2020 14:34:35 by SYSTEM
    
```



Area Percent Report

```

-----
Sorted By      : Signal
Multiplier     : 1.0000
Dilution       : 1.0000
Do not use Multiplier & Dilution Factor with ISTDs
    
```

Signal 1: DAD1 A, Sig=254,4 Ref=off

Peak #	RetTime [min]	Type	Width [min]	Area [mAU*s]	Height [mAU]	Area %
1	7.419	VV	0.0629	4011.35791	998.15295	99.5862
2	8.679	BB	0.0570	16.66913	4.51877	0.4138
Totals :				4028.02704	1002.67173	

Signal 2: DAD1 B, Sig=210,4 Ref=off

Peak #	RetTime [min]	Type	Width [min]	Area [mAU*s]	Height [mAU]	Area %
1	6.201	BB	0.0647	199.32999	47.73454	0.9517
2	7.420	BV	0.0741	1.41059e4	3044.59326	67.3482
3	7.545	VB	0.1029	6257.36719	949.75531	29.8756
4	8.679	VV	0.0575	211.21495	56.64956	1.0084
5	9.115	BV	0.0634	64.11224	15.79515	0.3061
6	10.167	VB	0.0629	106.81802	26.58922	0.5100
Totals :				2.09448e4	4141.11704	

*** End of Report ***

*For R&D use only

*If you have any comments and suggestions, please contact us by sales@amadischem.com