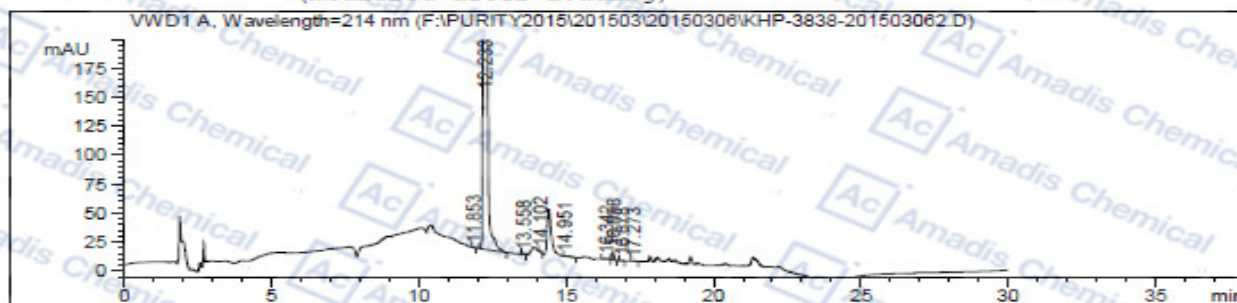


## HPLC of 862892-90-8

```

=====
Acq. Operator   :                               Seq. Line :    9
Acq. Instrument : Instrument 1                   Location  : Vial 14
Injection Date  : 12/12/2019 7:07:53 PM        Inj       :    2
                                                Inj Volume: 10.0 µl
Acq. Method     : C:\CHEM32\1\METHODS\NEW-POLARITY-214NM.M
Last changed    : 12/12/2019 10:44:07 AM
Analysis Method : C:\CHEM32\1\METHODS\R.M
Last changed    : 12/12/2019 3:47:32 PM
                  (modified after loading)
=====
  
```



### Area Percent Report

```

=====
Sorted By      : Signal
Multiplier:    : 1.0000
Dilution:      : 1.0000
Use Multiplier & Dilution Factor with ISTDs
=====
  
```

Signal 1: VWD1 A, Wavelength=214 nm

Peak #	RetTime [min]	Type	Width [min]	Area mAU	Height [mAU]	Area %
1	11.853	BB	0.0699	1.38679	3.17645e-1	7.499e-3
2	12.233	BB	0.0993	1.84260e4	3002.92432	99.6420
3	13.558	BB	0.0705	2.51545	5.69044e-1	0.0136
4	14.102	BB	0.0631	5.72586	1.46493	0.0310
5	14.951	BB	0.2607	9.04441	4.31296e-1	0.0489
6	16.342	BB	0.1595	7.08146	6.55848e-1	0.0383
7	16.598	BB	0.0732	35.74779	7.68121	0.1933
8	16.878	BB	0.0917	2.65837	4.63598e-1	0.0144
9	17.273	BB	0.0926	2.04814	3.18005e-1	0.0111

```
Totals :                               1.84922e4  3014.82590
```

\*\*\* End of Report \*\*\*

\*For R&D use only

\*If you have any comments and suggestions, please contact us by [sales@amadischem.com](mailto:sales@amadischem.com)