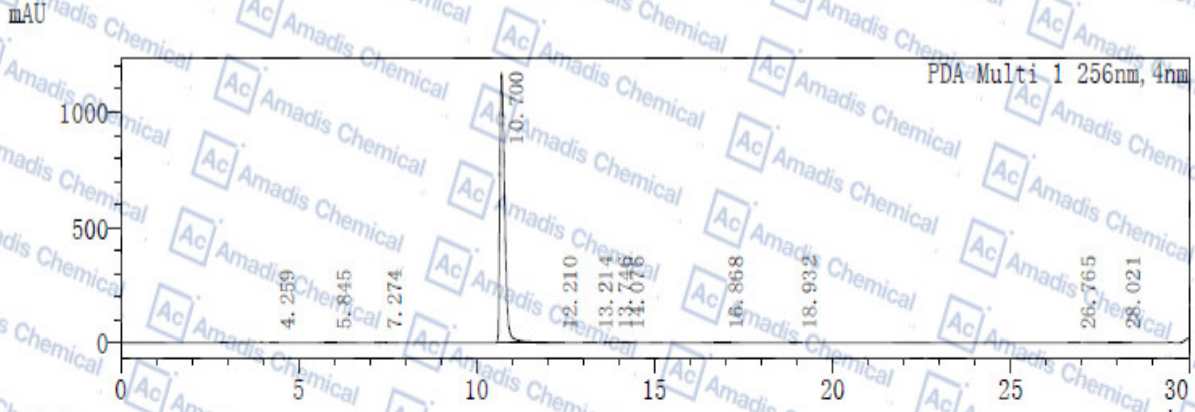


HPLC of 7421-40-1

色谱图



峰表

PDA Ch1 256nm

峰号	保留时间	面积	高度	理论塔板数(USP)	拖尾因子	分离度(USP)	面积%
1	4.259	1172	229	11885	1.324	-	0.010
2	5.845	6536	954	14321	1.296	9.018	0.058
3	7.274	1418	203	20728	1.145	7.189	0.013
4	10.700	11159783	1171915	28196	1.656	14.995	99.597
5	12.210	1288	192	68134	1.848	6.725	0.011
6	13.214	5326	583	39352	0.901	4.356	0.048
7	13.746	4875	732	79972	1.194	2.309	0.044
8	14.076	8733	1109	66126	1.373	1.595	0.078
9	16.868	8579	1011	83597	1.298	12.349	0.077
10	18.932	1046	135	114663	1.124	9.029	0.009
11	26.765	1324	166	229038	1.198	35.020	0.012
12	28.021	4824	341	87036	1.192	4.162	0.043
总计		11204904	1177570				100.000

*For R&D use only

*if you have any comments and suggestions, please contact us by sales@amadischem.com