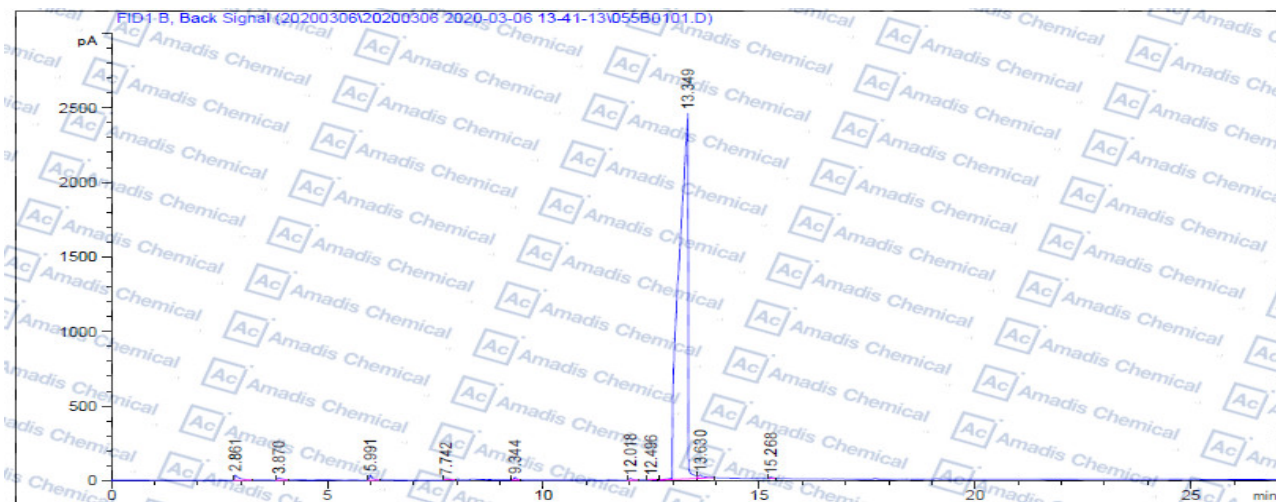


GC of 85272-31-7



Area Percent Report

Sorted By : Signal 1.0000
Multiplier: : 1.0000
Dilution: : 1.0000
Use Multiplier & Dilution Factor with ISTDs

Signal 1: FID1 B, Back Signal

Peak #	RetTime [min]	Type	Width [min]	Area [pA*s]	Height [pA]	Area %
1	2.861	BB	0.0895	226.56119	33.405242	0.62697
2	3.870	BB	0.0903	87.66226	12.97231	0.24244
3	5.991	BB	0.0654	138.45045	30.56207	0.38289
4	7.742	BB	0.0982	44.09666	5.20314	0.12195
5	9.344	BB	0.0569	64.00546	17.40492	0.17701
6	12.018	BB	0.0671	53.04350	11.23160	0.14670
7	12.496	BB	0.0791	28.46129	5.14301	0.07871
8	13.349	BV	0.1718	3.52734e4	2452.01514	97.55090
9	13.630	VV	0.1144	206.59308	22.74369	0.57110
10	15.268	BB	0.0576	36.78592	10.06436	0.19173
Totals:				3.61590e4	2600.99267	

*** End of Report ***

*For R&D use only

*if you have any comments and suggestions, please contact us by sales@amadischem.com