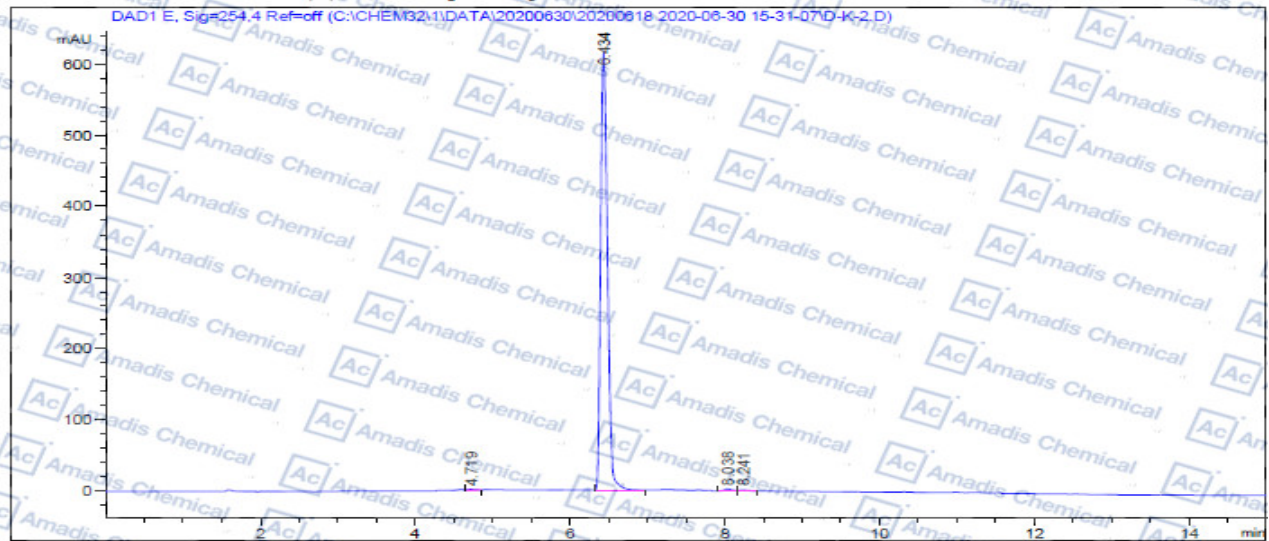


HPLC of 115144-35-9

```

=====
Acq. Operator   : admin                      Seq. Line :    1
Acq. Instrument : LC-1260                    Location  : Pl-A9
Injection Date  : 6/30/2020 3:32:12 PM      Inj       :    1
                                           Inj Volume: 5.000 ul
Different Inj Volume from Sample Entry! Actual Inj Volume : 3.000 ul
Acq. Method     : C:\Chem32\1\Data\20200630\20200618\2020-06-30_15-31-07D-K-2.D
Last changed    : 6/30/2020 3:31:07 PM by admin
Analysis Method : C:\Chem32\1\Data\20200617\20200618_2020-06-22_18-50-18\5-95-15min.M
                                           (Sequence Method)
Last changed    : 6/23/2020 3:57:04 PM by admin
                                           (modified after loading)
Additional Info  : Peak(s) manually integrated
=====
  
```



Area Percent Report

```

=====
Sorted By      : Signal
Multiplier     : 1.00000
Dilution       : 1.00000
Use Multiplier & Dilution Factor with ISTDs
=====
  
```

Signal 1: DAD1.E, Sig=254.4 Ref=off

Peak #	RetTime [min]	Type	Width [min]	Area [mAU*s]	Height [mAU]	Area %
1	4.719	VV	0.0969	17.80627	1.15361	0.2079
2	6.434	BB	0.0948	3721.54272	613.65216	99.1094
3	8.038	BV	0.0997	16.90793	2.60662	0.4503
4	8.241	VB	0.1178	8.72271	1.10932	0.2324

Totals: 3754.98463 618.52172

*** End of Report ***

*For R&D use only

*if you have any comments and suggestions, please contact us by sales@amadischem.com