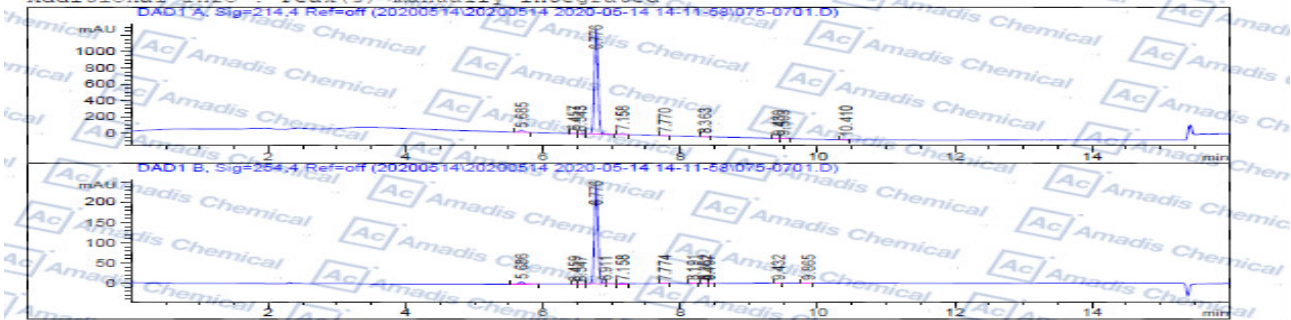


HPLC of 1055331-73-1

```

Acq. Operator   : JLW_1433                               Sed. Line      : 7
Acq. Instrument : HPLC-13                               Location       : 75
Injection Date  : 5/14/2020 3:54:31 PM                  Inj            : 1
Different Inj. Volume from Sample Entry! Actual Inj Volume : 5.000 µl
Acq. Method     : C:\Chem32\1\Data\20200514\20200514 2020-05-14 14-11-58\10-90A 214NM.M
Last changed   : 5/14/2020 2:11:58 PM by JLW_1433
Analysis Method : C:\Chem32\1\Data\20200514\20200514 2020-05-14 14-11-58\10-90A 214NM.M
Last changed   : 5/14/2020 3:06:02 PM by JLW_1433
                (modified after loading)
Sample Info    : 1130808-2020051402706 A-RP-S15
Additional Info : Peak(s) manually integrated
    
```



Area Percent Report

Sorted By: Signal
Multiplier: 1.0000
Dilution: 1.0000
Do not use Multiplier & Dilution Factor with ISTDs

Signal 1: DAD1 A, Sig=214.4 Ref=off

Peak #	RetTime [min]	Type	Width [min]	Area [mAU*s]	Height [mAU]	Area %
1	5.688	MM	0.0688	108.37084	26.05686	2.16150
2	6.459	MF	0.0626	11.23389	2.77259	0.22439
3	6.547	FM	0.0617	2.89549	0.71251	0.05739
4	6.776	MM	0.0620	4790.66211	1289.55432	95.61659
5	7.158	MM	0.0617	56.41236	15.24676	1.1283
6	7.770	MM	0.0614	8.76028	1.83403	0.1382
7	8.363	MM	0.0589	9.36586	2.74578	0.1974
8	9.430	MF	0.0663	5.40286	1.38754	0.1091
9	9.509	FM	0.0744	6.64051	1.48734	0.1329
10	10.410	MM	0.0611	2.27008	0.18732e-1	0.0464
Totals				4999.82791	1341.62469	

Signal 2: DAD1 B, Sig=254.4 Ref=off

Peak #	RetTime [min]	Type	Width [min]	Area [mAU*s]	Height [mAU]	Area %
1	5.686	BV	0.0651	22.95146	5.45204	2.4330
2	6.459	MF	0.0555	4.88103e-1	1.46693e-1	0.0517
3	6.547	FM	0.0594	6.63410e-1	1.86198e-1	0.0703
4	6.776	MF	0.0620	908.06921	244.10686	96.2609
5	6.911	FM	0.0704	2.66157	6.30212e-1	0.2821
6	7.158	MM	0.0601	2.78706	7.72670e-1	0.2954
7	7.774	MM	0.0584	1.05292	3.00654e-1	0.1116
8	8.191	MM	0.0612	7.70922e-1	2.09304e-1	0.0817
9	8.362	MF	0.0607	1.88711	5.18370e-1	0.2000
10	8.407	FM	0.0456	4.47389e-1	1.63385e-1	0.0474
11	9.432	MM	0.0699	6.98019e-1	1.86318e-1	0.0740
12	9.865	MM	0.0692	3.64687e-1	2.08225e-1	0.0917
Totals				943.34186	252.86142	

*** End of Report ***

*For R&D use only

*if you have any comments and suggestions, please contact us by sales@amadischem.com