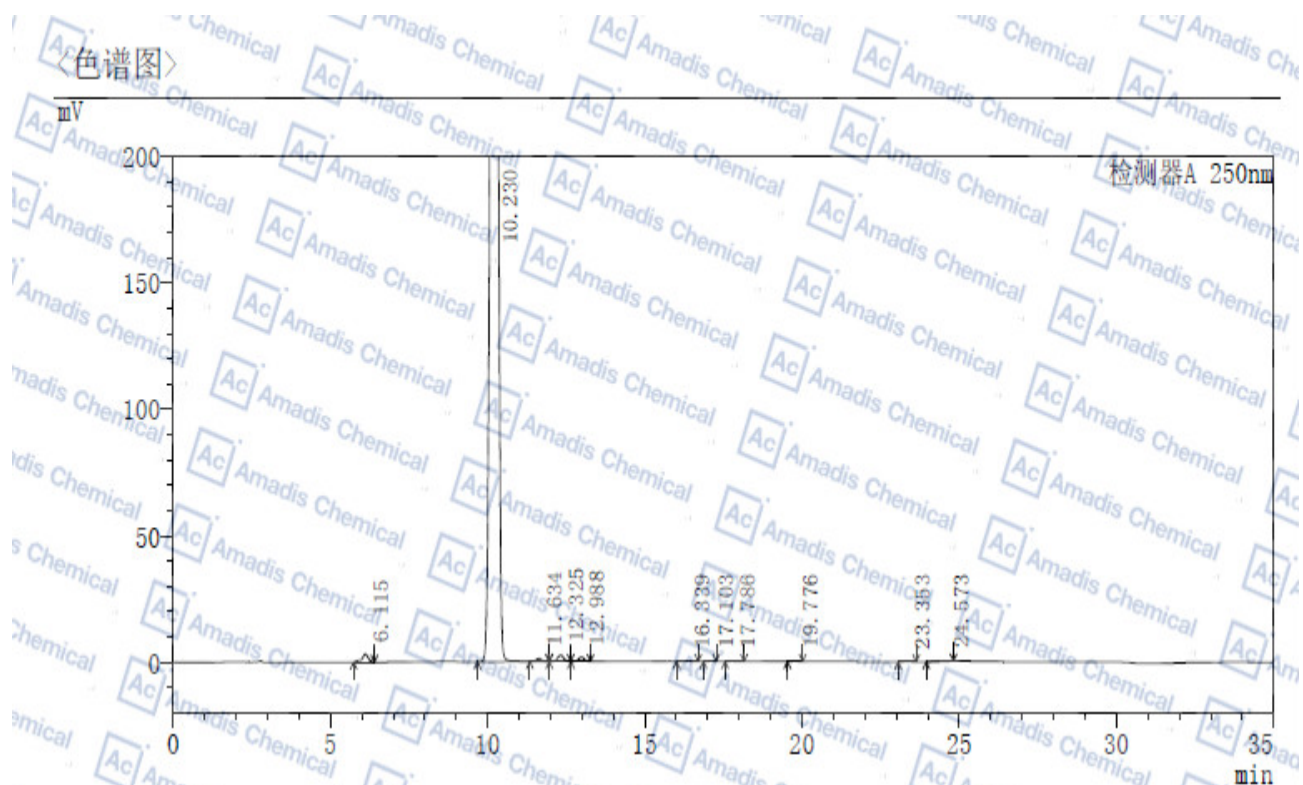


HPLC of 402957-28-2



〈峰表〉

检测器A 250nm

峰号	保留时间	面积	面积%	高度	理论塔板数(USP)	拖尾因子	分离度(USP)
1	6.115	42308	0.354	3164	5687	0.82	—
2	10.230	11837791	99.016	927701	14075	0.90	12.3
3	11.634	12778	0.107	1098	21704	1.04	4.2
4	12.325	32085	0.268	2512	20467	1.00	2.1
5	12.988	20223	0.169	1635	24047	0.99	1.9
6	16.339	1538	0.013	82	16527	—	7.9
7	17.103	659	0.006	63	56707	0.93	1.9
8	17.786	1353	0.011	98	37695	1.27	2.1
9	19.776	1392	0.012	110	51780	1.01	5.6
10	23.353	2226	0.019	148	52321	0.99	9.5
11	24.573	3130	0.026	151	36571	0.75	2.6
总计		11955483	100.000	936760			

*For R&D use only

*If you have any comments and suggestions, please contact us by sales@amadischem.com