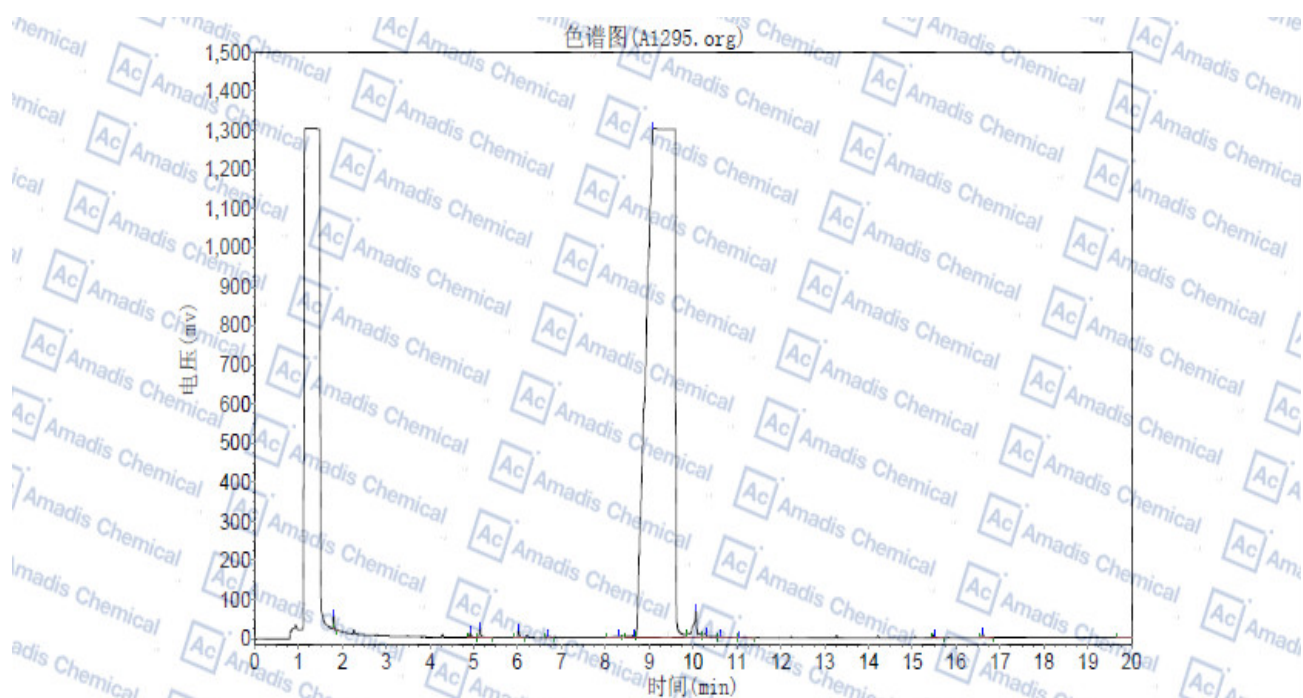


### GC of 877-65-6



分析结果表

峰号	峰名	保留时间	峰高	峰面积	含量
1		1.807	40118.500	58562.102	0.1038
2		4.923	12245.462	27977.699	0.0496
3		5.148	22892.801	71501.328	0.1267
4		6.023	16359.467	39889.398	0.0707
5		6.690	3015.188	20573.813	0.0365
6		8.307	4089.628	45399.414	0.0804
7		8.648	5424.878	53750.508	0.0952
8		9.090	1302325.750	55419896.000	98.1915
9		10.065	63240.160	445736.906	0.7897
10		10.298	10723.134	97593.906	0.1729
11		10.615	2579.244	42391.719	0.0751
12		11.065	1639.768	25531.109	0.0452
13		15.498	8367.937	22088.119	0.0391
14		16.615	10107.714	35392.301	0.0627
15		20.165	389.237	34313.801	0.0608
总计			1503518.867	56440598.123	100.0000

\*For R&D use only

\*if you have any comments and suggestions, please contact us by [sales@amadischem.com](mailto:sales@amadischem.com)