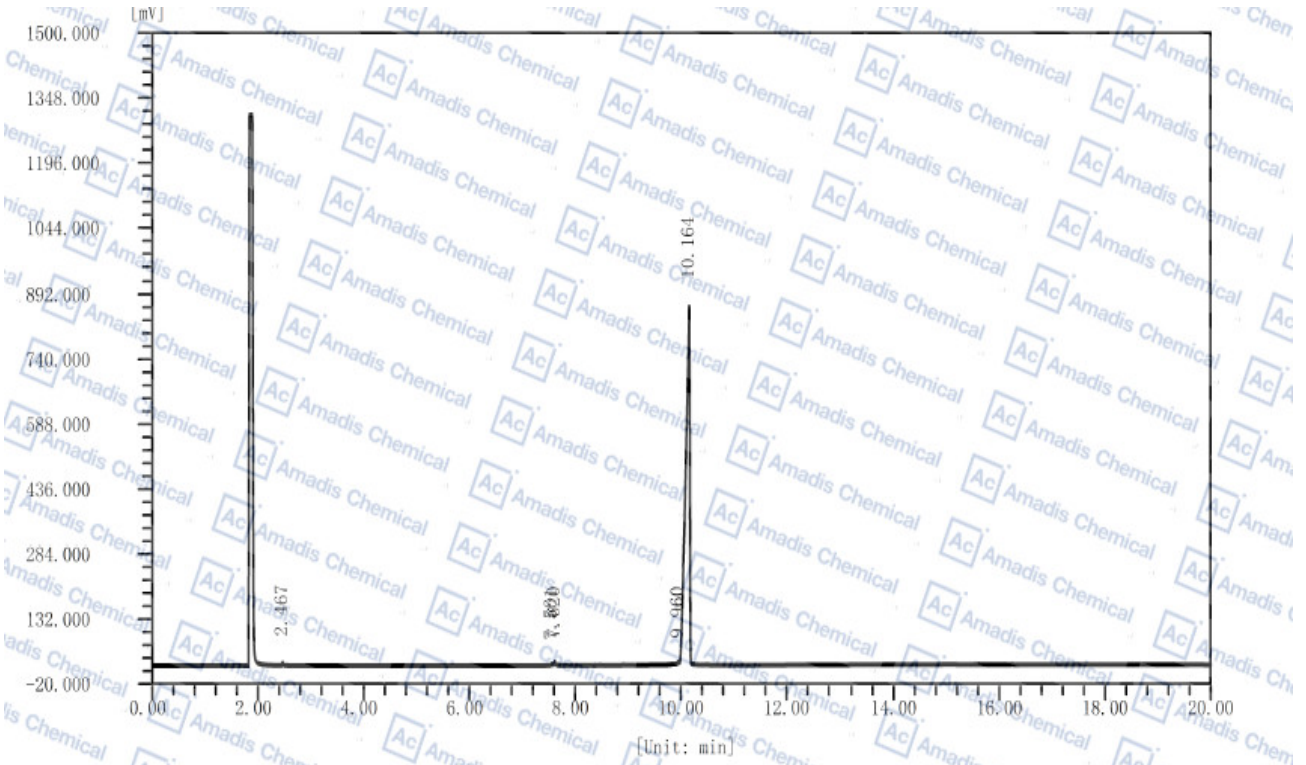


GC of 14686-89-6



分析结果

峰序	组分名	保留时间 [min]	半峰宽 [min]	峰高 [uV]	峰面积 [uV*s]	峰面积 [%]	含量 [%]	峰类型
1		2.467	0.023	11491.6	17728.5	0.3759	0.3759	BB
2		7.561	0.042	3155.3	7334.9	0.1555	0.1555	VV
3		7.620	0.039	7391.7	23711.0	0.5028	0.5028	VB
4		9.960	0.055	6972.8	26479.6	0.5615	0.5615	VV
5		10.164	0.088	843773.6	4640831.0	98.4043	98.4043	SVB
总计:				872784.9	4716085.1	100.0000	100.0000	

*For R&D use only

*if you have any comments and suggestions, please contact us by sales@amadischem.com