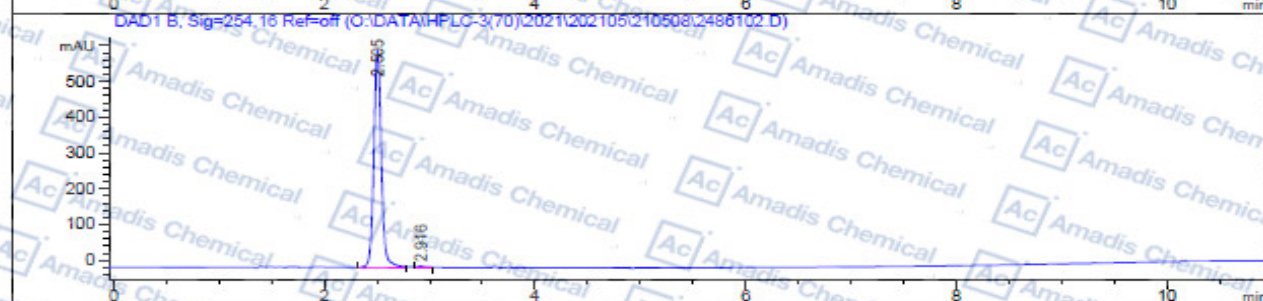
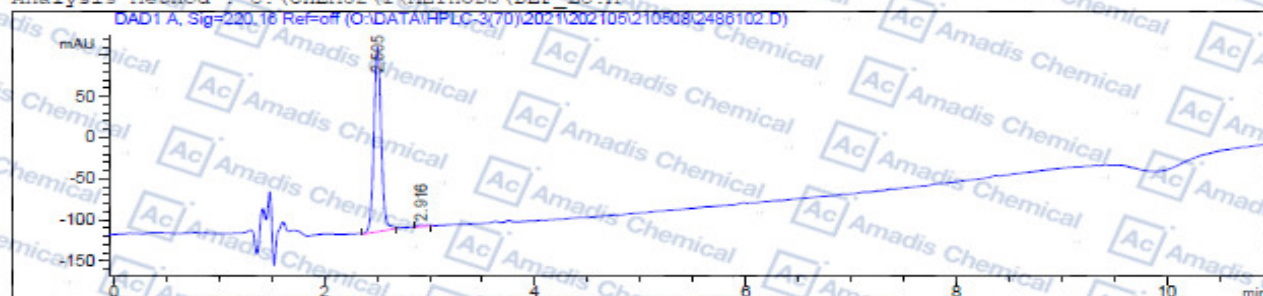


### HPLC of 817204-45-8

```

=====
Acq. Operator      :                               Seq. Line :    2
Acq. Instrument   : HPLC_70#                     Location  : Vial 23
Injection Date    : 5/8/2021 12:05:37 PM          Inj. #    :    1
                                                    Inj Volume: 5.0 µl
Acq. Method       : C:\CHEM32\1\METHODS\5-95.M
Last changed      : 4/28/2021 8:11:05 AM
Analysis Method   : C:\CHEM32\1\METHODS\DEF.LC.M
=====
  
```



#### Area Percent Report

```

Sorted By      : Signal
Multiplier     : 1.0000
Dilution       : 1.0000
Use Multiplier & Dilution Factor with ISTDs
  
```

Signal 1: DAD1 A, Sig=220,16 Ref=off

Peak #	RetTime [min]	Type	Width [min]	Area [mAU*s]	Height [mAU]	Area %
1	2.505	MM R	0.0805	1089.84387	225.68105	98.4751
2	2.916	MM R	0.1093	16.87656	2.57370	1.5249
Totals :				1106.72043	228.25475	

Signal 2: DAD1 B, Sig=254,16 Ref=off

Peak #	RetTime [min]	Type	Width [min]	Area [mAU*s]	Height [mAU]	Area %
1	2.505	MM R	0.0820	3000.66699	610.21442	99.3608
2	2.916	MM R	0.0948	19.29926	3.789193	0.6391
Totals :				3019.96625	613.60624	

\*For R&D use only

\*If you have any comments and suggestions, please contact us by [sales@amadischem.com](mailto:sales@amadischem.com)