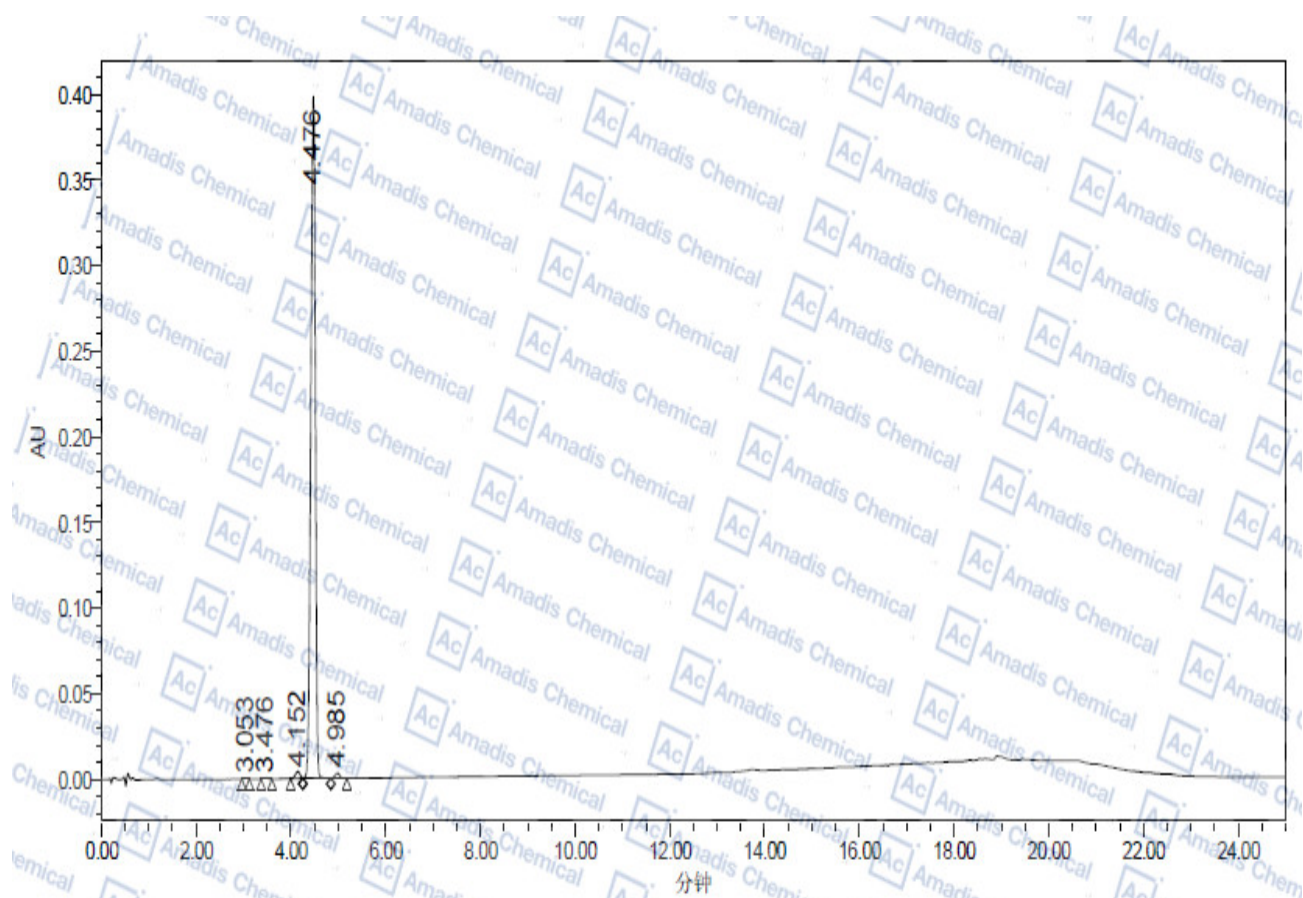


HPLC of 437742-34-2



处理通道说明: PDA Ch1 210 nm@4.8 nm

处理通道说明	保留时间 (分钟)	面积 (微伏*秒)	% 面积	高度 (微伏)
1 PDA Ch1 210 nm@4.8 nm	3.053	1593	0.06	314
2 PDA Ch1 210 nm@4.8 nm	3.476	3147	0.12	525
3 PDA Ch1 210 nm@4.8 nm	4.152	28040	1.06	4230
4 PDA Ch1 210 nm@4.8 nm	4.476	2596550	98.03	398146
5 PDA Ch1 210 nm@4.8 nm	4.985	19341	0.73	3002

*For R&D use only

*if you have any comments and suggestions, please contact us by sales@amadischem.com