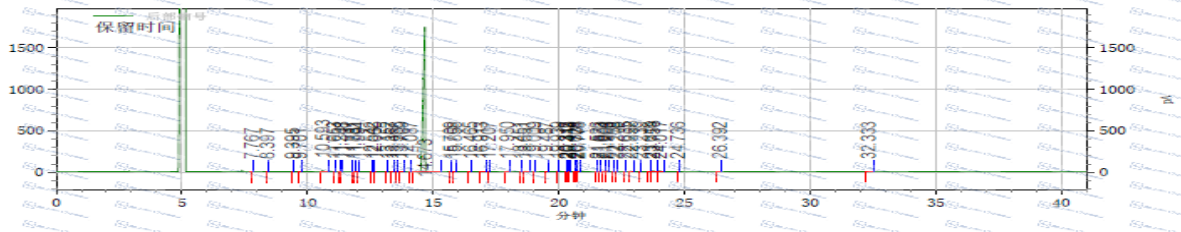


GC of 25574-11-2



保留时间	峰高	峰高百分比	面积	面积百分比
7.767	11371	0.08	18920	0.02889
8.397	433	0.00	361	0.00055
9.395	700	0.01	996	0.00152
9.701	588	0.00	1678	0.00256
10.593	124623	0.92	245112	0.37428
11.053	655	0.00	695	0.00106
11.281	535	0.00	699	0.00107
11.348	397	0.00	488	0.00075
11.781	1031	0.01	533	0.00081
11.881	1010	0.01	882	0.00135
11.994	3116	0.02	8249	0.01260
12.542	530	0.00	409	0.00062
12.666	460	0.00	442	0.00067
13.152	865	0.01	1955	0.00299
13.367	6910	0.05	12393	0.01892
13.538	684	0.01	509	0.00078
13.709	4142	0.03	11668	0.01782
14.087	9508	0.07	19095	0.02916
14.673	13332254	98.29	64956034	99.18729
15.709	328	0.00	623	0.00095
15.858	529	0.00	1099	0.00168
16.465	365	0.00	856	0.00131
16.913	1747	0.01	11987	0.01830
17.207	521	0.00	912	0.00139
17.950	643	0.00	2216	0.00338
18.451	469	0.00	1297	0.00198
18.651	8338	0.06	35643	0.05443
19.009	467	0.00	1710	0.00261
19.487	544	0.00	2645	0.00404
19.939	469	0.00	944	0.00144
20.313	946	0.01	2637	0.00403
20.317	0	0.00	0	0.00000
20.418	259	0.00	384	0.00059
20.628	1186	0.01	3590	0.00548
20.704	1367	0.01	3772	0.00576
20.776	948	0.01	2391	0.00365
21.526	864	0.01	1770	0.00270
21.633	555	0.00	905	0.00138
21.804	488	0.00	1697	0.00259
21.903	481	0.00	1501	0.00229
22.168	556	0.00	1619	0.00247
22.278	537	0.00	1117	0.00171
22.635	683	0.01	2352	0.00359
22.858	4303	0.03	14759	0.02254
23.239	598	0.00	1822	0.00278
23.616	325	0.00	969	0.00148
23.758	18018	0.13	48425	0.07394
24.017	16338	0.12	48746	0.07443
24.736	392	0.00	1316	0.00201
26.392	525	0.00	2674	0.00408
32.333	452	0.00	4766	0.00728

总计	13564053	100.00	65488262	100.00000
----	----------	--------	----------	-----------

\*For R&D use only

\* if you have any comments and suggestions, please contact us by [sales@amadischem.com](mailto:sales@amadischem.com)