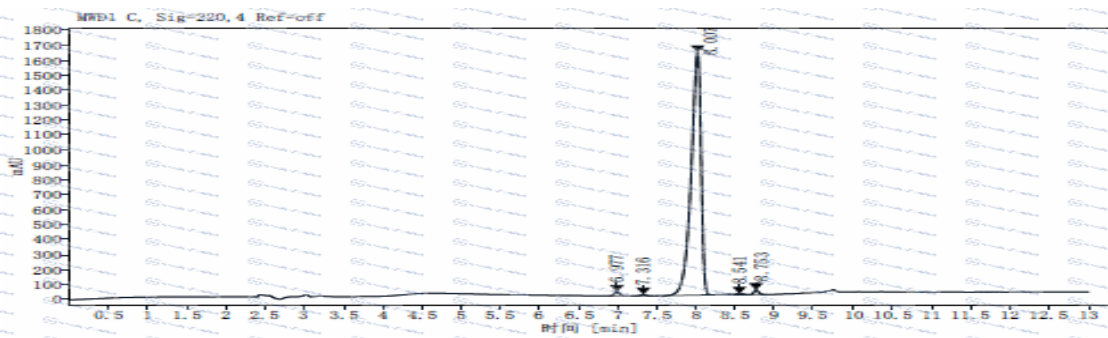
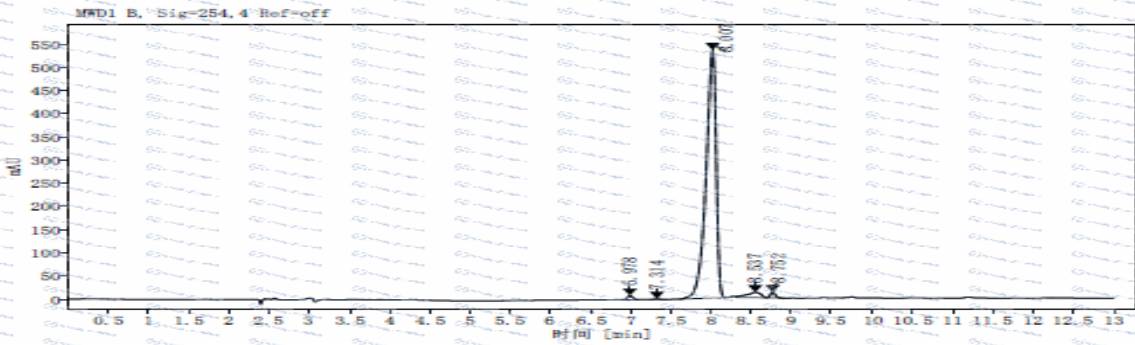


HPLC of 120173-41-3

数据文件: D:\data\2022\2022_02\2022_02_14\20220214-2_2022-02-14 13-45-11\120173-41-3-q.D
 样品名称: HPLC-120173-41-3
 样品量: 0.000 样品类型: 样品
 仪器: LC1260 位置: P1-A5
 进样日期: 2022-02-14 17:29:39+08:00 进样: 1 of 1
 采集方法: 5-95 A2 B2 0.03%TFA体系 13min0.7 流速 .M 进样量: 2.000
 最后更改时间: 2022-02-15 08:51:14+08:00 (调用后修改) 采集操作者: 系统



信号: MWD1 B, Sig=254.4 Ref=off

保留时间 [分钟]	类型	峰宽 [分钟]	峰面积	峰高	面积%	名称	峰分高度_USP
6.978	MF	0.0764	40.5409	3.8462	0.8242		
7.314	FM	0.0860	7.5133	1.4558	0.1527		2.8920
8.007	BB	0.1308	4677.5737	536.2335	95.0958		4.0930
8.537	VB	0.1546	141.5366	11.6234	2.8775		2.1640
8.752	BB	0.0660	51.6393	12.0524	1.0498		1.1518
总和			4918.8038				

信号: MWD1 C, Sig=220.4 Ref=off

保留时间 [分钟]	类型	峰宽 [分钟]	峰面积	峰高	面积%	名称	峰分高度_USP
6.977	BB	0.0676	110.7288	25.2873	0.7584		
7.316	BB	0.0690	40.8436	3.5024	0.2797		2.8735
8.007	BB	0.1319	14253.8086	1623.1847	97.6261		3.9841
8.541	VB	0.1192	65.6764	6.5402	0.4498		2.2823
8.753	BB	0.0673	129.3502	30.6291	0.8859		1.2106
总和			14600.4076				

*For laboratory or manufacturing use only, not for drug, food and household use.

*If you have any comments and suggestions, please contact us by sales@amadischem.com