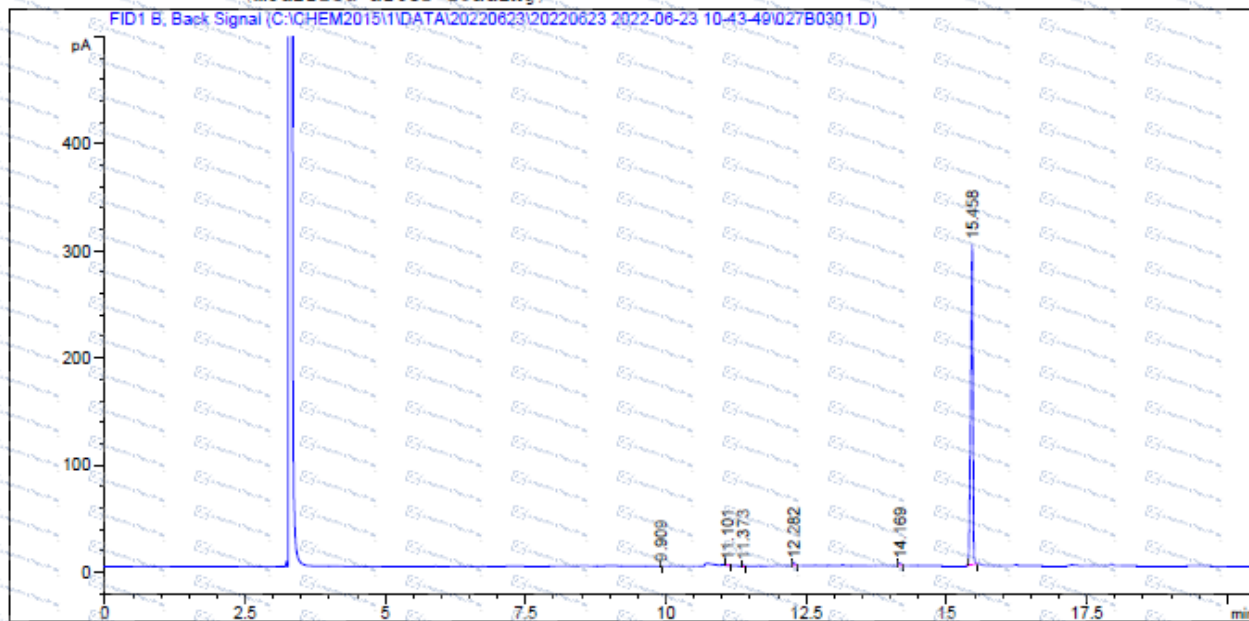


GC of 96843-23-1

```

=====
Acq. Operator   : QCF                               Seq. Line :    3
Acq. Instrument : Instrument 1                       Location  : Vial 27
Injection Date  : 6/23/2022 11:39:41 AM            Inj       :    1
                                                    Inj Volume: 0 µl
Acq. Method     : C:\CHEM2015\1\DATA\20220623\20220623 2022-06-23 10-43-49\TEST-KR(HP-5)-2.M
Last changed    : 12/10/2021 5:00:05 PM by QCF
Analysis Method : C:\CHEM2015\1\METHODS\TEST-KR(HP-5)-1.M
Last changed    : 6/23/2022 1:02:59 PM by QCF
                (modified after loading)
=====
  
```



Area Percent Report

```

=====
Sorted By      :      Signal
Multiplier:    :      1.0000
Dilution:      :      1.0000
Use Multiplier & Dilution Factor with ISTDs

Signal 1: FID1.B, Back Signal

Peak RetTime Type Width Area Height Area
# [min] [min] [pA*s] [pA] %
-----|-----|-----|-----|-----|-----
1 9.909 BB 0.0192 6.35760e-1 5.05356e-1 0.07432
2 11.101 BB 0.0270 1.20053 6.84171e-1 0.14034
3 11.373 BB 0.0217 8.31405e-1 5.79499e-1 0.09719
4 12.282 BB 0.0299 5.98336 2.98449 0.69942
5 14.169 BB 0.0347 5.49346 2.44529 0.64216
6 15.458 BB 0.0398 841.32782 298.80676 98.34658
Totals : 855.47234 306.00557
=====
  
```

*For laboratory or manufacturing use only, not for drug, food and household use.

*if you have any comments and suggestions, please contact us by sales@amadischem.com