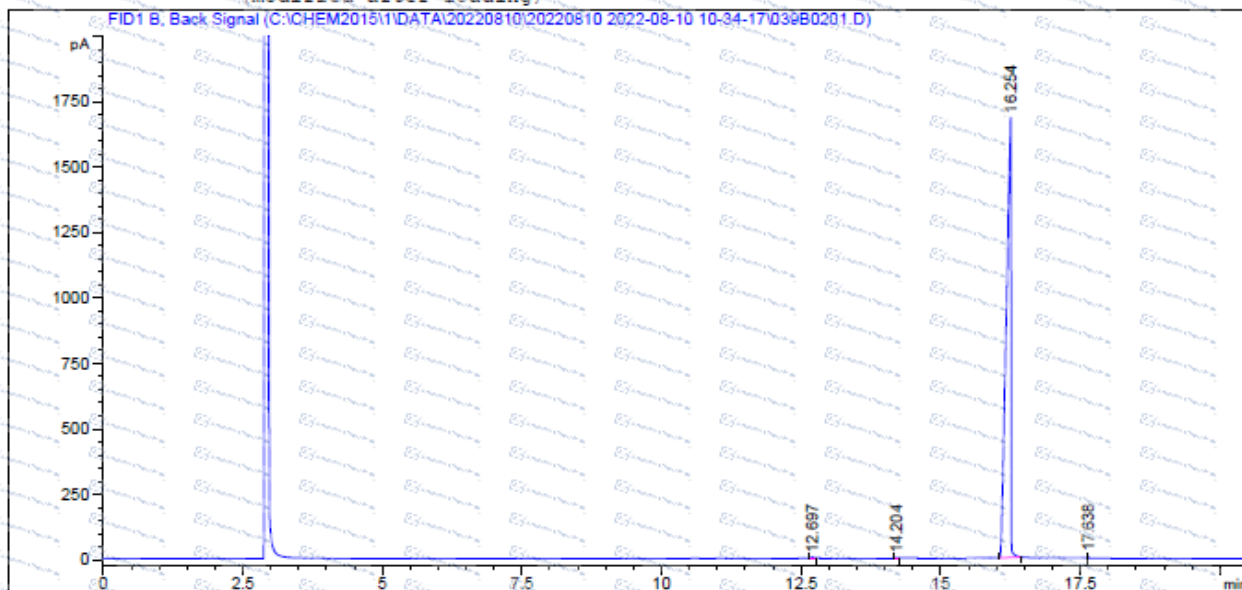


## GC of 4038-14-6

```

=====
Acq. Operator   : QCF                               Seq. Line   :    2
Acq. Instrument : Instrument 1                       Location    : Vial 39
Injection Date  : 8/10/2022 11:04:38 AM             Inj         :    1
                                                    Inj Volume  :    0 µl
Acq. Method    : C:\CHEM2015\1\DATA\20220810\20220810 2022-08-10 10-34-17\TEST-KR(HP-5)-2.M
Last changed   : 12/10/2021 5:00:05 PM by QCF
Analysis Method: C:\CHEM2015\1\METHODS\TEST-KR(HP-5)-1.M
Last changed   : 8/10/2022 12:57:36 PM by QCF
                (modified after loading)
=====
    
```



### Area Percent Report

```

=====
Sorted By      :      Signal
Multiplier:    :      1.0000
Dilution:      :      1.0000
Use Multiplier & Dilution Factor with ISTDs
    
```

Signal 1: FID1 B, Back Signal

Peak #	RetTime [min]	Type	Width [min]	Area [pA*s]	Height [pA]	Area %
1	12.697	BB	0.0340	8.82866	3.77847	0.08926
2	14.204	BB	0.0334	2.56410	1.02573	0.02592
3	16.254	BB	0.0716	9878.45898	1680.82141	99.87329
4	17.638	BB	2.39e-3	1.14000	8.12729	0.01153
Totals:				9890.99174	1693.75290	

\*\*\* End of Report \*\*\*

\*For laboratory or manufacturing use only, not for drug, food and household use.

\*If you have any comments and suggestions, please contact us by [sales@amadischem.com](mailto:sales@amadischem.com)