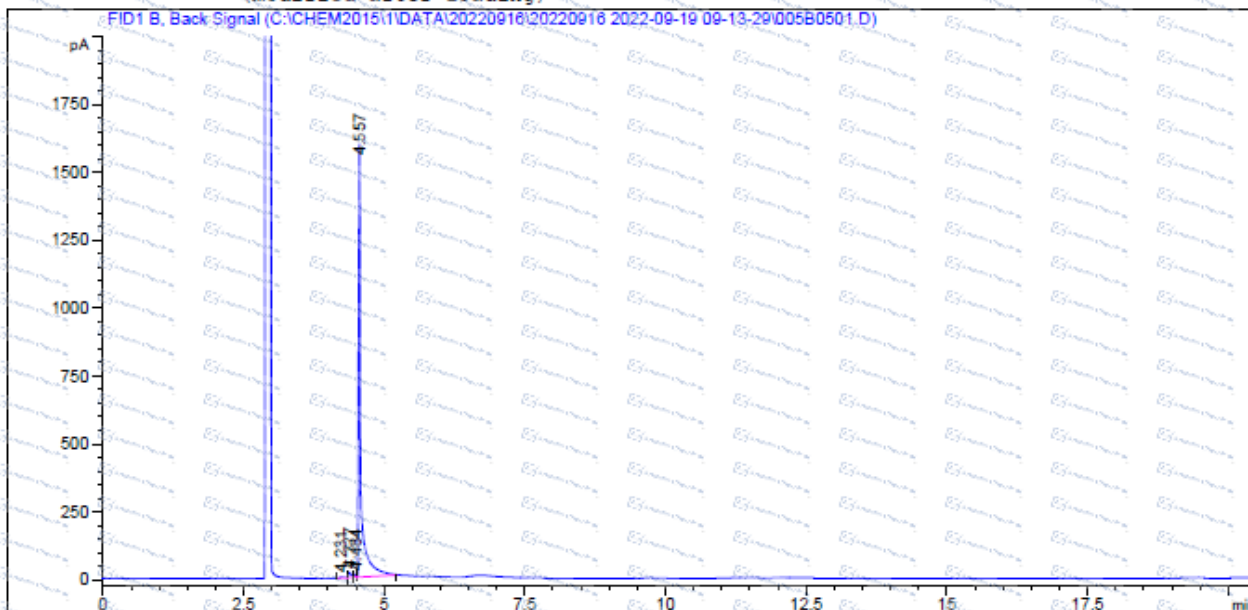


GC of 4088-60-2

```

=====
Acq. Operator   : QCF                               Seq. Line :    5
Acq. Instrument : Instrument 1                       Location  : Vial 5
Injection Date  : 9/19/2022 11:07:33 AM             Inj       :    1
                                                    Inj Volume: 0 µl
Acq. Method    : C:\CHEM2015\1\DATA\20220916\20220916 2022-09-19 09-13-29\TEST-KR(HP-5)-2.M
Last changed   : 9/14/2022 4:13:23 PM by QCF
Analysis Method: C:\CHEM2015\1\METHODS\TEST-KR(HP-5).M
Last changed   : 9/19/2022 1:35:14 PM by QCF
                (modified after loading)
=====
  
```



Area Percent Report

```

=====
Sorted By      : Signal
Multiplier    : 1.0000
Dilution      : 1.0000
Use Multiplier & Dilution Factor with ISTDs
  
```

Signal 1: FID1 B, Back Signal

Peak #	RetTime [min]	Type	Width [min]	Area [pA*s]	Height [pA]	Area %
1	4.231	BV	0.0774	22.25424	4.22719	0.47031
2	4.377	VV	0.0470	60.06404	18.94426	1.26937
3	4.484	VV	0.0478	31.79272	10.96174	0.67189
4	4.557	VB	0.0431	4617.69141	1536.29834	97.58842
Totals				4731.80239	1570.43153	

*** End of Report ***

***For laboratory or manufacturing use only, not for drug, food and household use.**

*if you have any comments and suggestions, please contact us by sales@amadischem.com