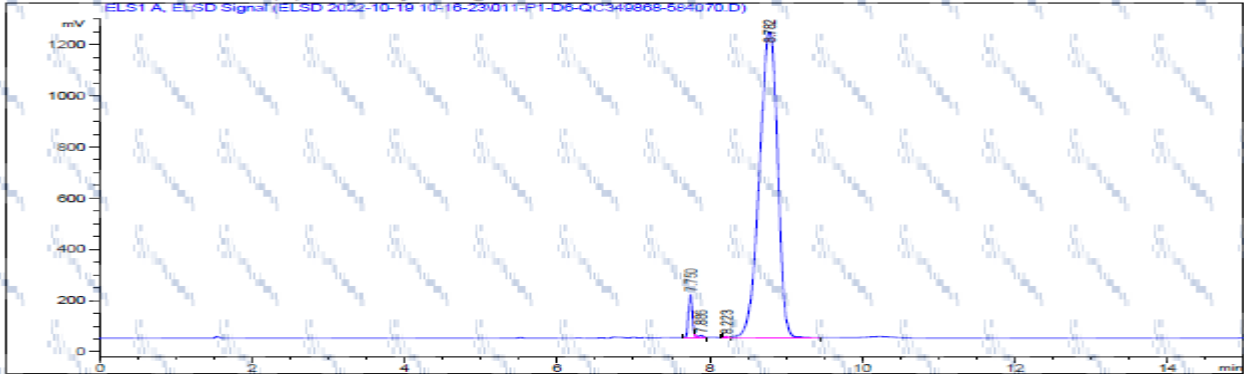


## HPLC of 2413296-69-0

```

-----
Acq. Operator   : admin                               Seq. Line : 11
Sample Operator : admin
Acq. Instrument : QC-061HPLC-ELSD                    Location  : P1-D-06
Injection Date  : 10/19/2022 1:20:15 PM              Inj       : 1
                                                    Inj Volume: 2.000 µl
Different Inj Volume from Sample Entry! Actual Inj Volume : 10.000 µl
Acq. Method    : D:\ChemStation\2\Data\ELSD 2022-10-19 10-16-23\elsd-CHUSHI.M
Last changed   : 2/10/2022 1:08:09 PM by admin
Analysis Method : D:\ChemStation\2\Data\ELSD 2022-10-19 10-16-23\elsd-CHUSHI.M (Sequence
Method)
Last changed   : 10/19/2022 1:52:15 PM by admin
                (modified after loading)
Additional Info : Peak(s) manually integrated
                (ELSD A, ELSD Signal (ELSD 2022-10-19 10-16-23\011\F1-D6-QC340888-564070.D))
-----

```



### Area Percent Report

```

-----
Sorted By      : Signal
Multiplier    : 1.0000
Dilution      : 1.0000
Use Multiplier & Dilution Factor with ISTDs
-----

```

Signal 1: ELS1 A, ELSD Signal

Peak #	RetTime [min]	Type	Width [min]	Area [mV*s]	Height [mV]	Area %
1	7.750	BV R	0.0565	594.08160	168.99060	2.9061
2	7.886	VB E	0.0625	30.41924	7.54924	0.1488
3	8.223	BV E	0.0483	6.86915	2.36813	0.0336
4	8.782	VV R	0.2049	1.98110e4	1193.92981	96.9115

Peak #	RetTime [min]	Type	Width [min]	Area [mV*s]	Height [mV]	Area %
Totals :				2.04424e4	1372.83778	

\*\*\* End of Report \*\*\*

\*For laboratory or manufacturing use only, not for drug, food and household use.

\*if you have any comments and suggestions, please contact us by [sales@amadischem.com](mailto:sales@amadischem.com)