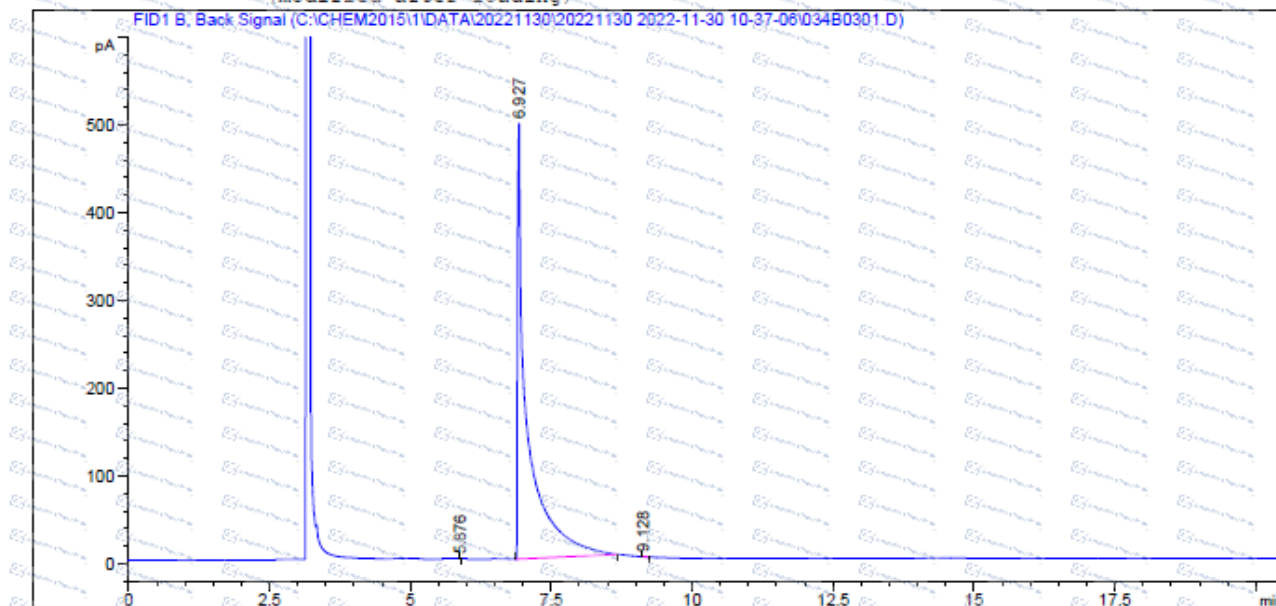


## GC of 109-78-4

```
=====
Acq. Operator   : QCF                               Seq. Line :    3
Acq. Instrument : Instrument 1                       Location  : Vial 34
Injection Date  : 11/30/2022 11:29:13 AM             Inj       :    1
                                                    Inj Volume: 0 µl
Acq. Method     : C:\CHEM2015\1\DATA\20221130\20221130 2022-11-30 10-37-06\TEST-KR(HP-5)-2.M
Last changed    : 9/14/2022 4:13:23 PM by QCF
Analysis Method : C:\CHEM2015\1\METHODS\TEST-KR(HP-5).M
Last changed    : 11/30/2022 12:44:42 PM by QCF
                  (modified after loading)
=====
```



=====  
Area Percent Report  
=====

Sorted By : Signal  
Multiplier: : 1.0000  
Dilution: : 1.0000  
Use Multiplier & Dilution Factor with ISTDs

Signal 1: FID1 B, Back Signal

Peak #	RetTime [min]	Type	Width [min]	Area [pA*s]	Height [pA]	Area %
1	5.876	BB	0.0188	1.60622e-1	1.11724e-1	0.00271
2	6.927	BB	0.1456	5918.90869	496.54691	99.98492
3	9.128	BB	0.0403	7.32271e-1	2.35482e-1	0.01237
Totals :				5919.80158	496.69411	

=====  
\*\*\* End of Report \*\*\*  
=====

\*For laboratory or manufacturing use only, not for drug, food and household use.

\*If you have any comments and suggestions, please contact us by [sales@amadischem.com](mailto:sales@amadischem.com)