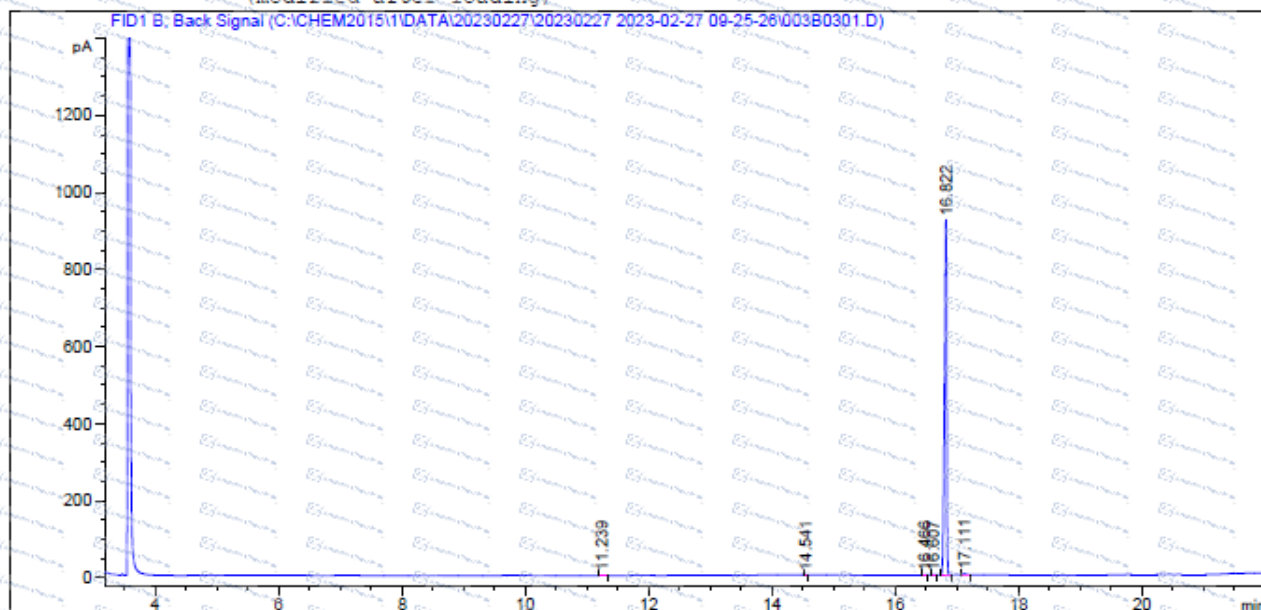


### GC of 58775-05-6

```

=====
Acq. Operator   : QCF                               Seq. Line :    3
Acq. Instrument : Instrument 1                       Location  : Vial 3
Injection Date  : 2/27/2023 10:24:39 AM             Inj       :    1
                                                    Inj Volume: 0 µl
Acq. Method    : C:\CHEM2015\1\DATA\20230227\20230227 2023-02-27 09-25-26\TEST-KR(HP-5)-2.M
Last changed   : 2/21/2023 9:15:41 AM by QCF
Analysis Method: C:\CHEM2015\1\METHODS\TEST-KR(HP-5).M
Last changed   : 2/27/2023 10:51:37 AM by QCF
                (modified after loading)
=====

```



#### Area Percent Report

```

=====
Sorted By      : Signal
Multiplier     : 1.0000
Dilution       : 1.0000
Use Multiplier & Dilution Factor with ISTDs
=====

```

Signal 1: FID1 B, Back Signal

Peak #	RetTime [min]	Type	Width [min]	Area [pA*s]	Height [pA]	Area %
1	11.239	BB	0.0665	3.95661	7.02310e-1	0.17078
2	14.541	BB	0.0214	5.16349e-1	2.95527e-1	0.02229
3	16.466	BB	0.0273	8.25876e-1	3.88846e-1	0.03565
4	16.607	BB	0.0269	5.35511e-1	2.41552e-1	0.02311
5	16.822	BB	0.0356	2300.65845	920.88416	99.30382
6	17.111	BB	0.0440	10.29468	2.77786	0.44435
Totals :				2316.78747	925.29025	

\*For laboratory or manufacturing use only, not for drug, food and household use.

\*If you have any comments and suggestions, please contact us by [sales@amadischem.com](mailto:sales@amadischem.com)