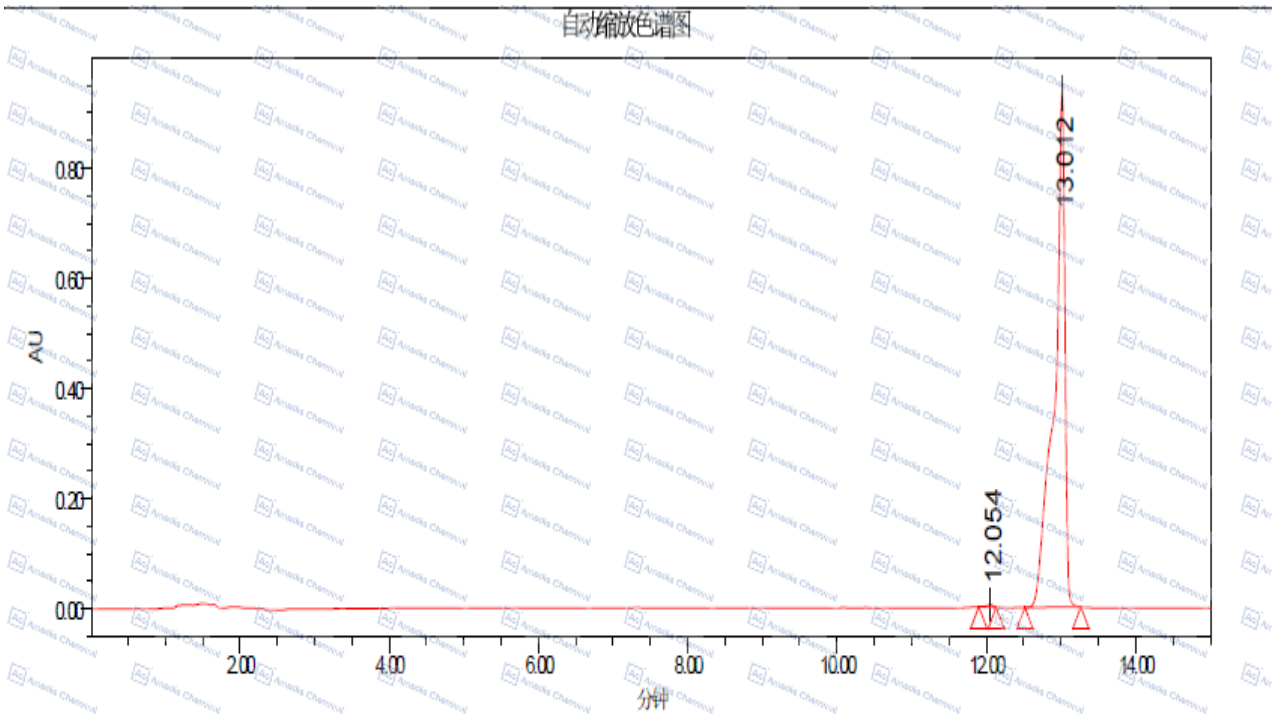


HPLC of 54857-86-2



处理通道 PDA280.0 纳米(PDA200.0 到400.0 纳米(在1.2 纳米))

	处理通道	保留时间 (分钟)	面积	%面积	峰高
1	PDA 280.0 纳米(PDA 200.0 到400.0 纳米(在1.2 纳米))	12.054	2357	0.25	4119
2	PDA 280.0 纳米(PDA 200.0 到400.0 纳米(在1.2 纳米))	13.012	929957	99.75	944464

*For laboratory or manufacturing use only, not for drug, food and household use.

*if you have any comments and suggestions, please contact us by sales@amadischem.com