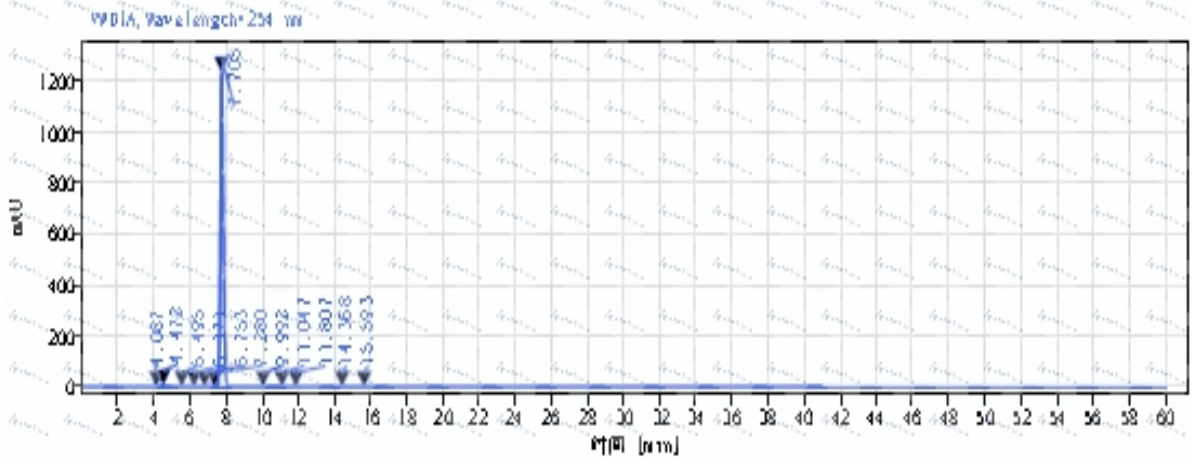


HPLC of 16807-13-9



信号: WVD1A, Wavelength=254 nm

保留时间 [min]	类型	峰宽 [min]	峰面积	峰高	峰面积%
4.087	UV m	0.25	0.13	0.02	0.0009
4.472	UV m	1.01	53.49	7.45	0.3778
5.495	UV m	0.70	2.84	0.33	0.0201
6.171	UV m	0.65	1.10	0.11	0.0078
6.753	UV m	0.40	0.11	0.01	0.0007
7.280	UV m	0.30	0.17	0.02	0.0012
7.705	UV m	2.33	14082.66	1236.26	99.4815
9.992	UV m	1.05	8.24	0.52	0.0582
11.047	UV m	0.75	1.04	0.06	0.0074
11.807	UV m	0.85	1.05	0.06	0.0074
14.368	UV m	1.08	3.47	0.17	0.0245
15.593	UV m	1.47	1.76	0.07	0.0124
总和			14198.06		

*For laboratory or manufacturing use only, not for drug, food and household use.

*If you have any comments and suggestions, please contact us by sales@amadischem.com