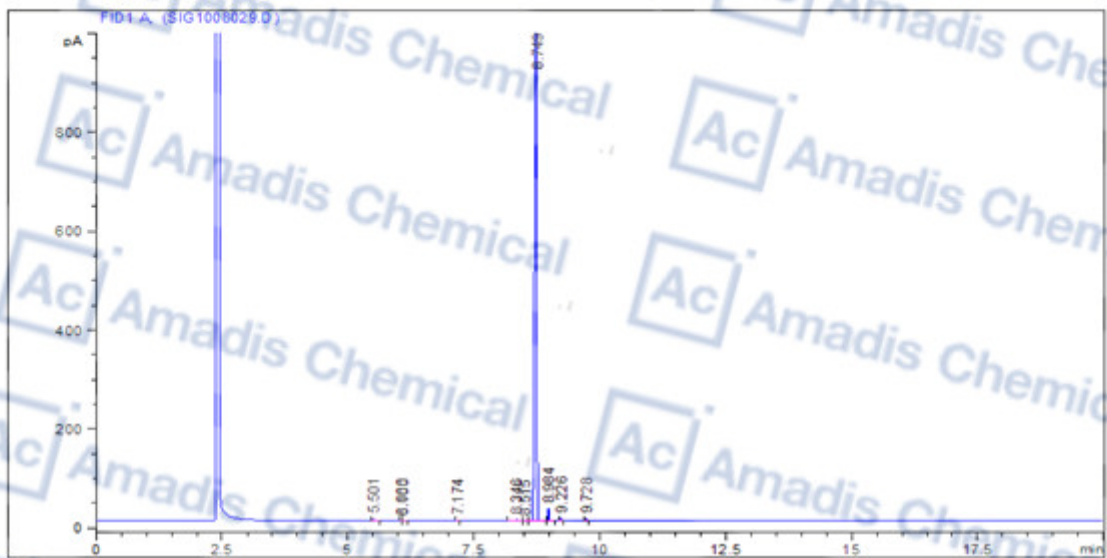


**GC**

**Analytical Instrument:** HP6890 GC

**Analytical Condition:** HP-5 30m×0.32mm×0.25um, Carrier: N<sub>2</sub>, 1ml/min, Column Temp. 80°C /2min--20°C/min--280°C/15min, Inj. Temp. 280°C, Det. Temp. 300°C



Peak #	Type	Ret Time [min]	Height [pA]	Area [pA*s]	Content [%]
1	BB	5.501	3.73870	6.21958	0.17161
2	VV	6.066	1.17459	1.61551	0.04458
3	VB	6.100	9.07598e-1	1.80076	0.04969
4	VV	7.174	1.72087	2.74243	0.07567
5	VV	8.346	1.73440	6.02218	0.16617
6	VV	8.515	2.88498e-1	1.10449	0.03048
7	VV	8.749	1284.24622	3562.17871	98.28817
8	VB	8.984	24.11564	30.08905	0.83022
9	VV	9.226	5.66760	7.38933	0.20389
10	BV	9.728	3.90229	5.05717	0.13954
					100.0000

\* If you have any comments and suggestions, please contact us by [sales@amadischem.com](mailto:sales@amadischem.com)