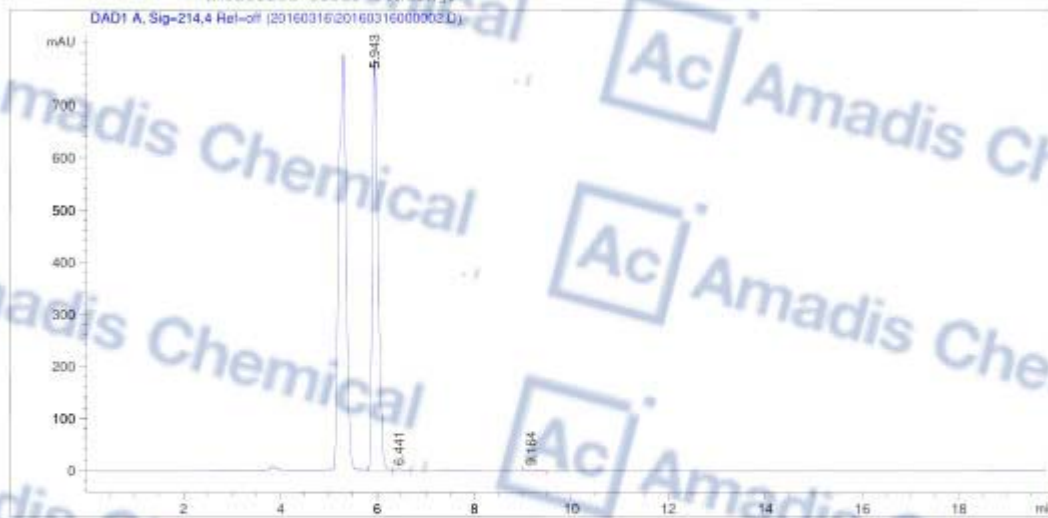


HPLC

Data File C:\CHEM32\1\DATA\20160316\20160316000002.D
 Sample Name: 78919-13-8

```

=====
Acq. Operator   : ZJ
Acq. Instrument : 仪器 1                      Location : Vial 22
Injection Date  : 3/16/2016 09:31:20          Inj Volume : 2.0 ul
Acq. Method    : C:\CHEM32\1\METHODS\TEST-KR-HC-STD.M
Last Changed   : 3/16/2016 09:51:44 by ZJ
                (modified after loading)
Analysis Method: C:\CHEM32\1\METHODS\TEST-KR.M
Last changed   : 3/16/2016 13:26:40 by #1
                (modified after loading)
=====
  
```



Area Percent Report

```

Sorted By      :      Signal
Multiplier:    :      1.0000
Dilution:      :      1.0000
Use Multiplier & Dilution Factor with ISTDs
  
```

Signal 1: DAD1 A, Sig=214,4 Ref-off

Peak #	RetTime [min]	Type	Width [min]	Area [mAU*s]	Height [mAU]	Area %
1	4.943	SV	0.1276	6475.99268	790.22949	99.4060
2	6.441	VB	0.1628	22.02814	1.93568	0.3381
3	9.164	SB	0.1698	16.66947	1.47562	0.2559

Data File C:\CHEM32\1\DATA\20160316\20160316000002.D
 Sample Name: 78919-13-8

Totals: 6514.69028 793.64080

*** End of Report ***

* If you have any comments and suggestions, please contact us by sales@amadischem.com