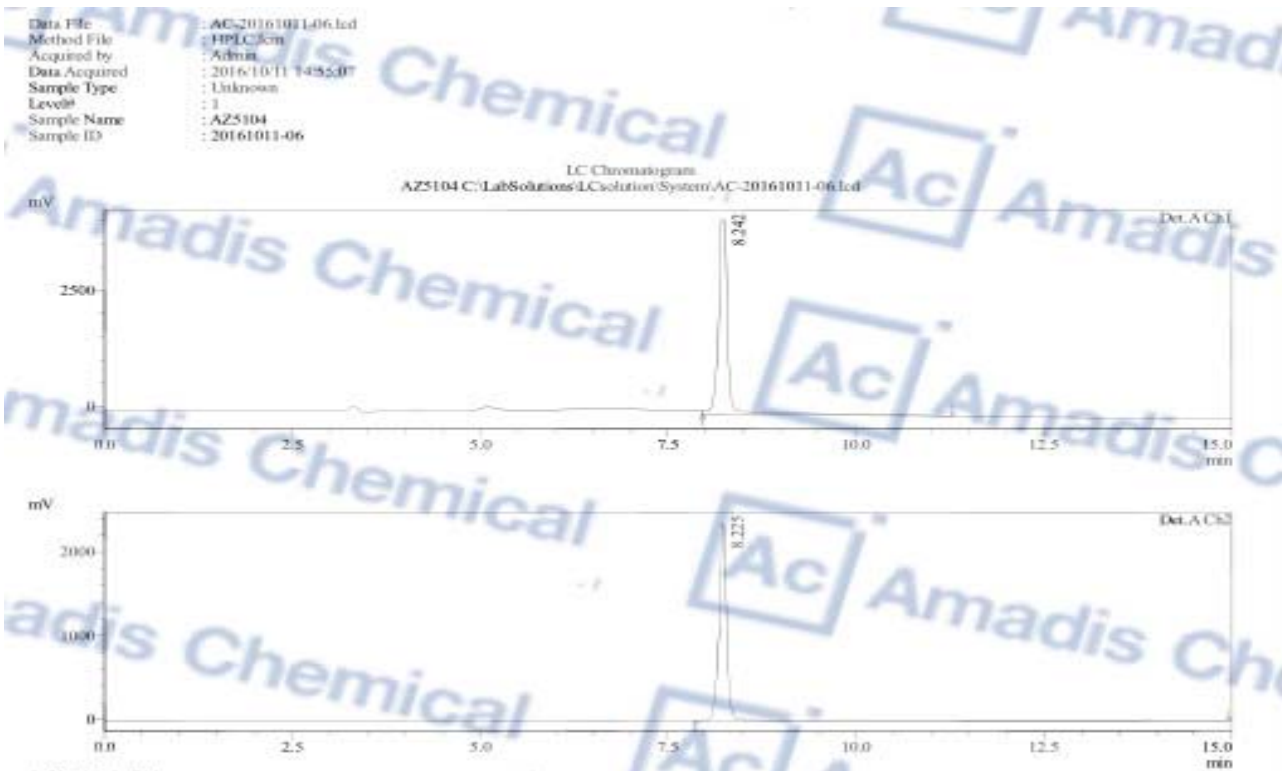


HPLC Of 1421373-98-9



PeakTable

Detector A Ch1 214nm

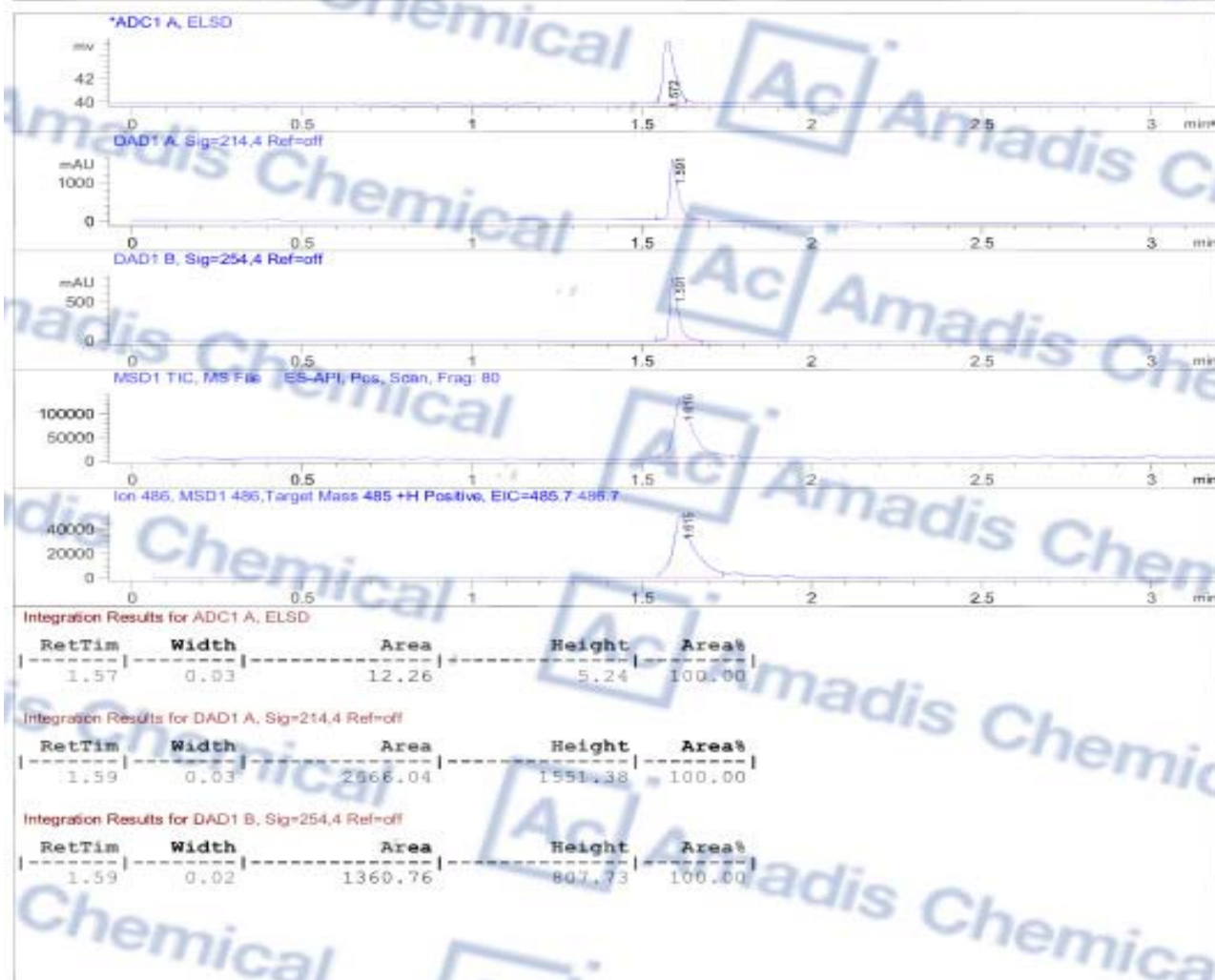
Peak#	Ret. Time	Area	Height	Area %	Height %
1	8.242	39135200	4184395	100.000	100.000
Total		39135200	4184395	100.000	100.000

PeakTable

Detector A Ch2 254nm

Peak#	Ret. Time	Area	Height	Area %	Height %
1	8.225	16386833	2354278	100.000	100.000
Total		16386833	2354278	100.000	100.000

File D:\DATA\A02\MONITOR\AC-20140816-7-2-45993-LCMSA001.D
 Injection Date : 13 Oct 14 10:31 am +0800 Tgt Mass (E2X) : 485.00
 Sample Name : AC-20140816-7-2 Location : P2-A-04
 Acq. Operator : A02-Monitor Inj : 1
 Spec. Reported : MS Integration Inj Volume : 2 ul
 Acq. Method : D:\METHODS\1-POS-MON-1.M
 Analysis Method : D:\METHODS\1-POS-MON-1.M
 Sample Info : Easy-Access Method: '1-POS-MON-1' 485.00
 Method Info : Column: SUNFIRE(4.6x 50 mm,)
 Mobile phase: H2O(0.05%TFA) (A) / ACN(0.05%TFA) (B)
 Elution program: Gradient from 10 to 95% of B in 1.5min at 1.8ml/min
 Temperature: 50 °C
 Detection: UV (214 , 4 nm) and MS (ESI, Pos mode ,70 to 1000 amu)



Integration Results for ADC1 A, ELSD

RetTim	Width	Area	Height	Area%
1.57	0.03	12.26	5.24	100.00

Integration Results for DAD1 A, Sig=214.4 Ref=off

RetTim	Width	Area	Height	Area%
1.59	0.03	2566.04	1551.38	100.00

Integration Results for DAD1 B, Sig=254.4 Ref=off

RetTim	Width	Area	Height	Area%
1.59	0.02	1360.76	807.73	100.00

* If you have any comments and suggestions, please contact us by sales@amadischem.com