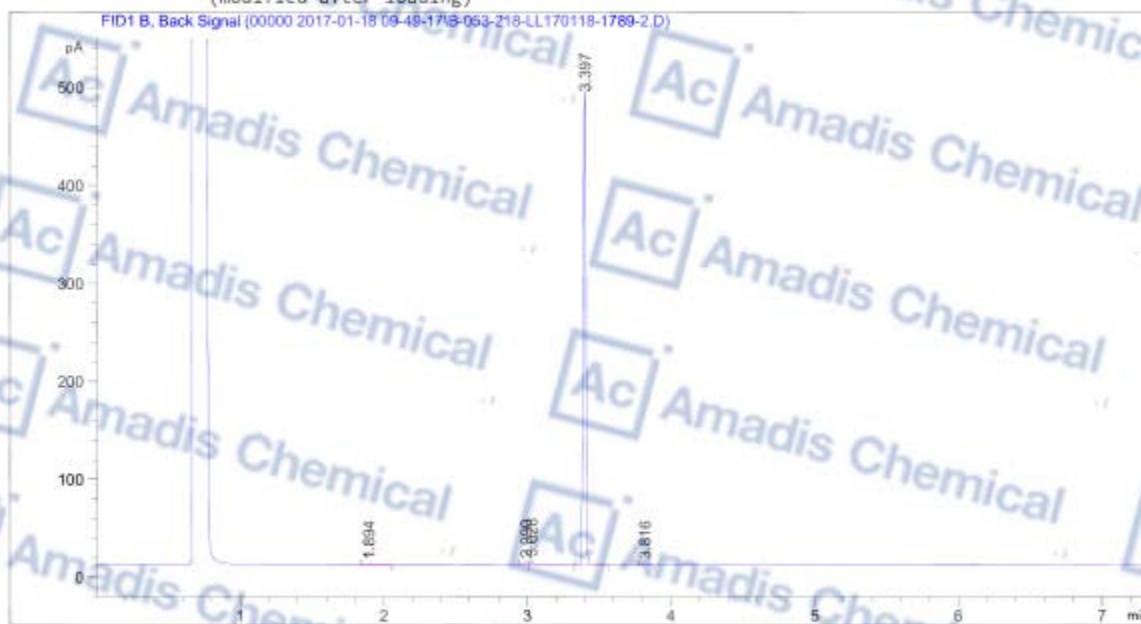


GC Of 754131-60-7

```

Acq. Operator   : SYSTEM                               Seq. Line : 53
Acq. Instrument : 7820A                               Location  : 218 (B)
Injection Date  : 1/18/2017 8:12:11 PM                Inj       : 1
                                                    Inj Volume: 1 µl

Acq. Method    : C:\Chem32\1\Data\00000 2017-01-18 09-49-17\20160722-220.M
Last changed   : 1/18/2017 8:07:51 PM by SYSTEM
                  (modified after loading)
Analysis Method: C:\Chem32\1\Data\00000 2017-01-18 09-49-17\20160722-220.M (Sequence Method)
Last changed   : 1/19/2017 10:04:17 AM by SYSTEM
                  (modified after loading)
    
```



Area Percent Report

```

Sorted By      : Signal
Multiplier     : 1.0000
Dilution      : 1.0000
Do not use Multiplier & Dilution Factor with ISTDs
    
```

Signal 1: FID1 B, Back Signal

Peak #	RetTime [min]	Type	Width [min]	Area [pA*s]	Height [pA]	Area %
1	1.894	BB	0.0286	2.53605	1.31030	0.38847
2	2.990	BV	0.0203	3.02873	2.30553	0.46394
3	3.028	VB	0.0278	7.30500	3.90430	1.11897
4	3.397	BB	0.0205	637.96478	478.88300	97.72256
5	3.816	BB	0.0226	1.99808	1.32270	0.30606
Totals :				652.83264	487.72582	

\* If you have any comments and suggestions, please contact us by [sales@amadischem.com](mailto:sales@amadischem.com)