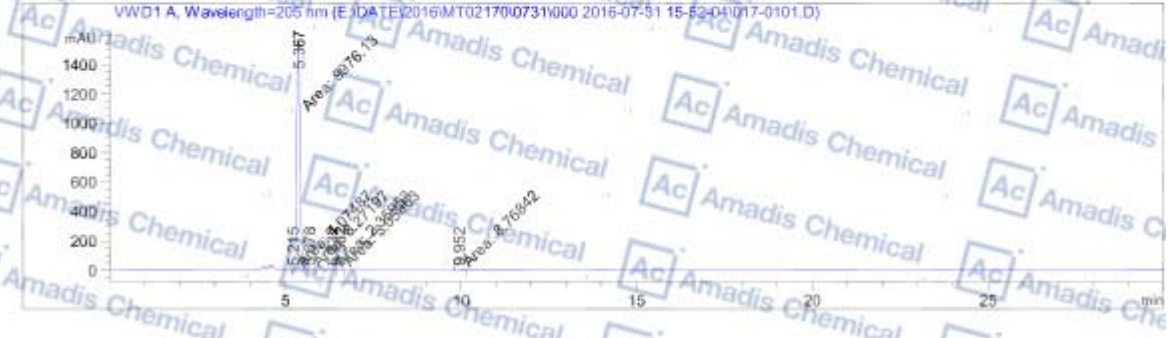


### HPLC Of 18968-05-3

Acq. Operator : zhaofeifei      Seq. Name :  
 Acq. Instrument : 1260 VWD      Location : U0117  
 Injection Date : 7/31/2016 3:52:58 PM      Inj : 1  
    Inj Volume : 20.000 µl  
 Acq. Method : E:\DATE\MT02170\0731\000 2016-07-31 15-52-04\MT02170-UV.M  
 Last changed : 7/31/2016 3:52:04 PM by zhaofeifei  
 Analysis Method : E:\DATE\2016\MT02170\0731\000 2016-07-31 15-52-04\MT02170-UV.M (Sequence Method)  
 Last changed : 7/31/2016 4:26:12 PM by zhaofeifei  
 Additional Info : Peak(s) manually integrated



Area Percent Report

Sorted By : Signal  
 Multiplier : 1.0000  
 Dilution : 1.0000  
 Do not use Multiplier & Dilution Factor with ISTDs

Signal 1: VWD1 A, Wavelength=205 nm

Peak #	RetTime [min]	Width [min]	Area [mAU*s]	Height [mAU]	Area %
1	5.2154	0.0461	4.07487	4.7423	0.0407
2	5.367	0.1068	9976.13086	1557.52991	82.7347
3	5.678	0.1099	16.27197	1.09194	0.0822
4	6.332	0.1018	2.35953	3.486886e-1	0.0236
5	6.562	0.1180	3.05863	4.320886e-1	0.0306
6	9.952	0.2210	8.76842	6.61171e-1	0.0877
Totals			1.00027e4	1561.50572	

\*\*\* End of Report \*\*\*

\* if you have any comments and suggestions, please contact us by [sales@amadischem.com](mailto:sales@amadischem.com)