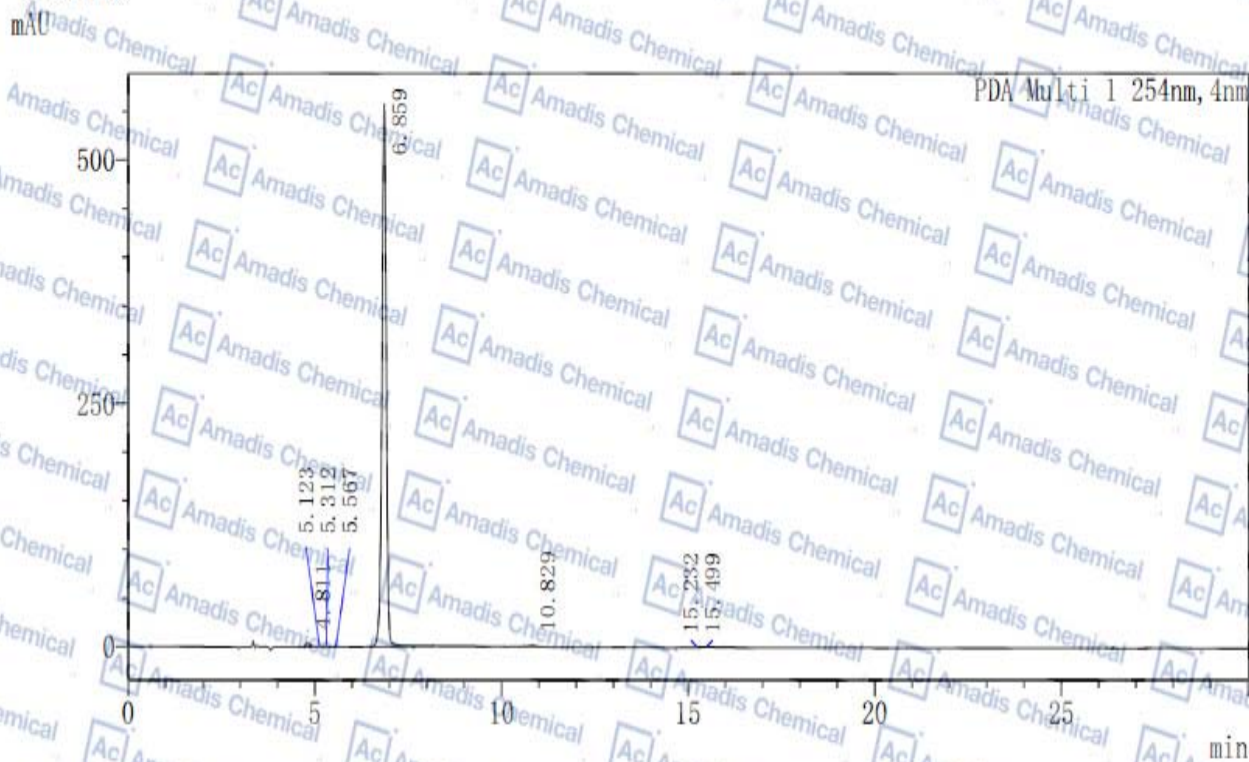


HPLC Of 261733-18-0

<色谱图>



<峰表>

PDA Ch1 254nm

峰号	保留时间	面积	高度	面积%
1	4.811	32150	3866	0.704
2	5.123	9094	713	0.199
3	5.312	1499	249	0.033
4	5.567	3003	292	0.066
5	6.859	4500613	557481	98.503
6	10.829	18546	1513	0.406
7	15.232	2603	126	0.057
8	15.499	1525	97	0.033
总计		4569032	564336	100.000

* if you have any comments and suggestions, please contact us by sales@amadischem.com