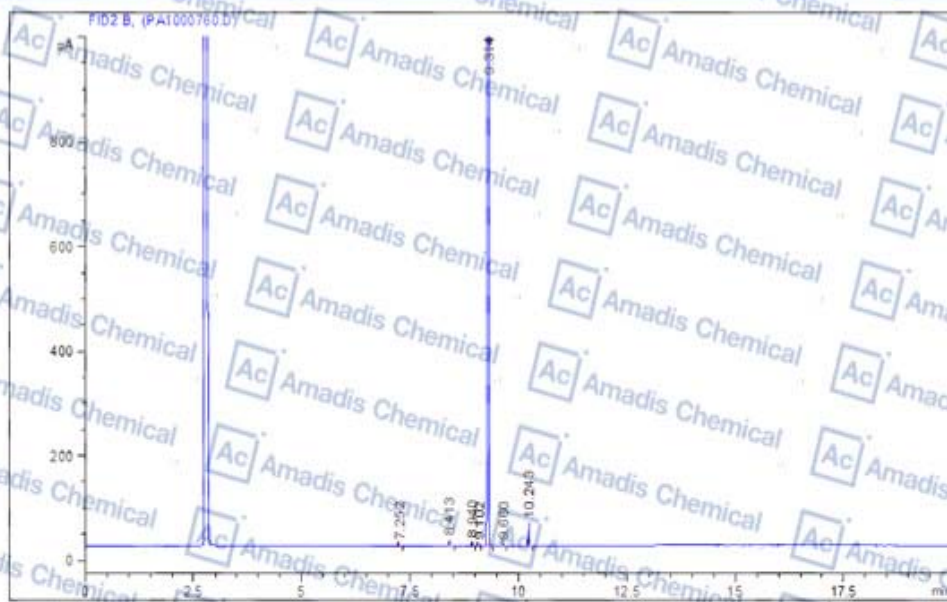


HPLC Of 85943-26-6

Analytical Condition: HP-5 30m×0.32mm×0.25um, Carrier: N₂, 1ml/min, Column Temp. 80 °C
 2min-20°C/min-280°C/15min, Inj. Temp. 280°C, Det. Temp. 300°C



Peak #	Type	Ret Time [min]	Height [pA]	Area [pA*s]	Content [%]
峰 #	保留时间 [min]	类型	峰高 [pA]	峰面积 [pA*s]	峰面积 %
1	7.252	BV	6.60532e-1	1.22388	0.02543
2	8.413	VB	8.98496	12.09997	0.25146
3	8.940	BV	4.86151	6.03062	0.12533
4	9.102	VV	9.55353e-1	1.24604	0.02590
5	9.314	VV	2445.72021	4735.91309	98.42277
6	9.660	VV	1.50095	2.00257	0.04162
7	10.243	BV	43.26222	53.29008	1.10749
					100.0000+

* If you have any comments and suggestions, please contact us by sales@amadischem.com