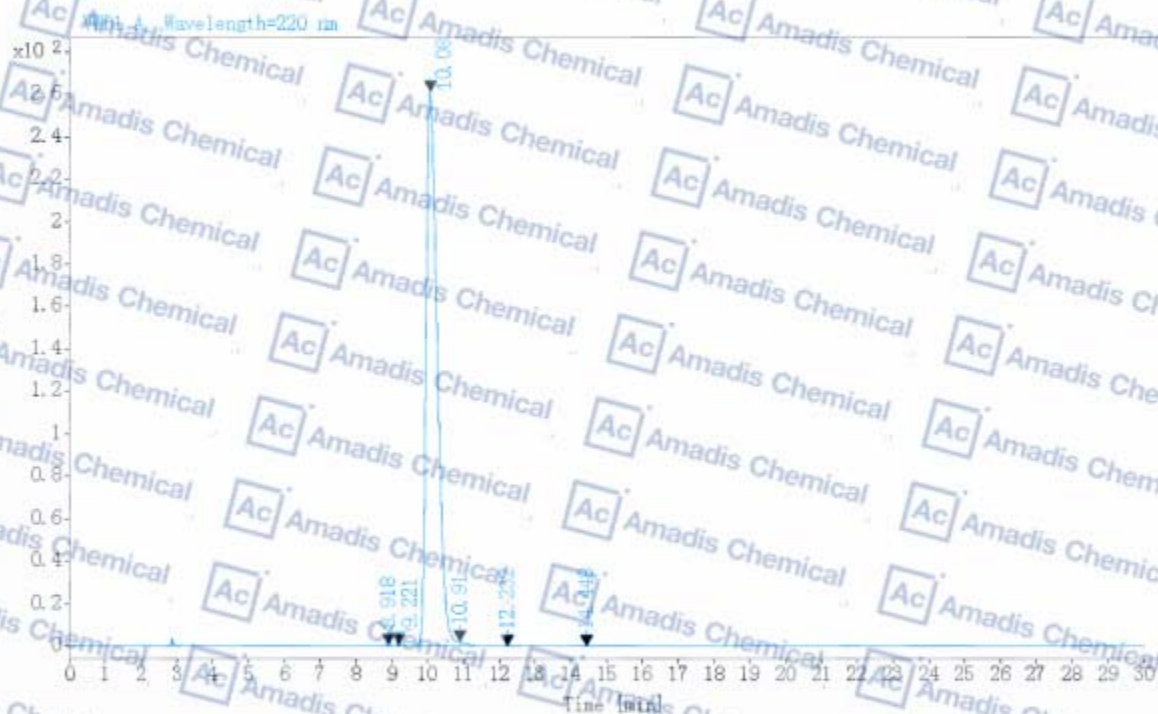


HPLC OF 113-79-1

Mobile phase: 6.6g of dibasic ammonium phosphate in 950ml of water, adjust with concentrated phosphoric acid to a pH of 3.0, dilute with water to 1000ml, to 870ml of this solution add 130ml of acetonitrile.
 Flow rate: 1.0ml/min
 Gradient: 100% 30min
 Column: Agilent Eclipse XDB-C18, 4.6*250mm, 5um, (A-015) Wavelength: 220nm
 Equipment: Agilent 1260 ID:2016051139

Instrument: 1260HPLC Location: 62
 Injection date: 2017/5/18 11:28:00 Injection: 1 of 1
 Last changed: 2017/5/18 15:04:22 Injection volume: 5.000
 Acq. operator: chen chao



VWD1 A, Wavelength=220 nm

| RT [min] | Type | Width [min] | Area | Height | Area% | Ratio |
|----------|------|-------------|-----------|----------|---------|-------|
| 8.918 | BV E | 0.4791 | 15.4031 | 0.4139 | 0.2712 | |
| 9.221 | VV E | 0.1996 | 4.7685 | 0.3486 | 0.0840 | |
| 10.080 | VF R | 0.3348 | 5627.5327 | 269.7693 | 99.0866 | |
| 10.910 | VB | 0.2337 | 27.3136 | 1.9477 | 0.4809 | |
| 12.232 | BB | 0.3526 | 1.7850 | 0.0597 | 0.0314 | |
| 14.448 | BB | 0.2888 | 2.6083 | 0.1072 | 0.0159 | |
| | Sum | | 5679.4112 | | | |

* if you have any comments and suggestions, please contact us by sales@amadischem.com