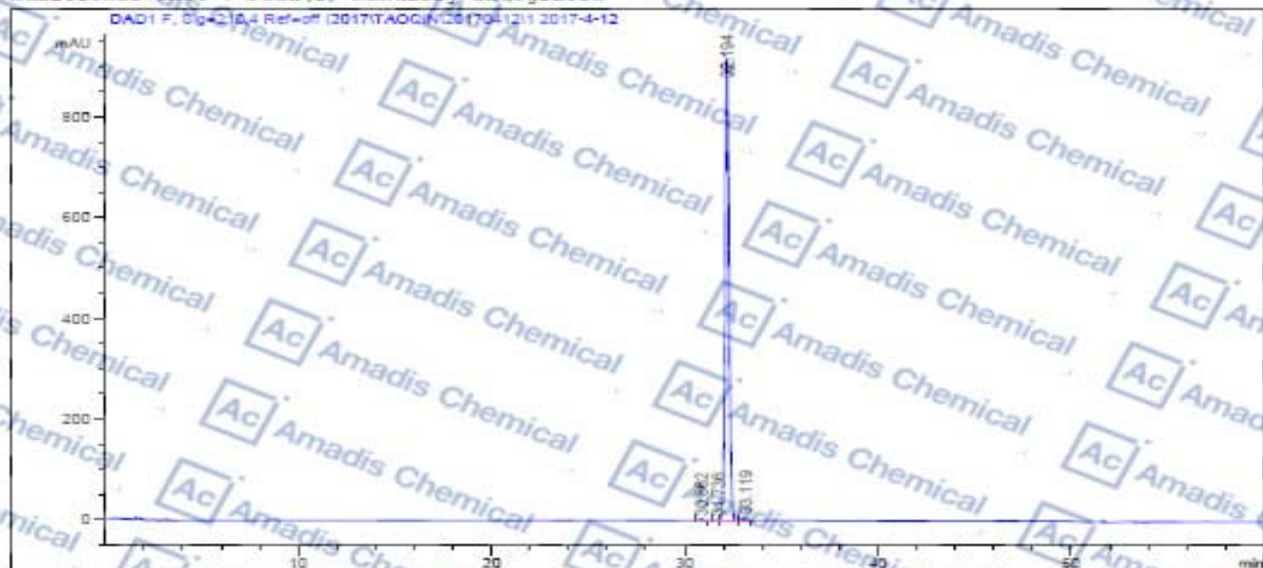


HPLC Of 252017-04-2

Acq. Operator : SYSTEM
 Acq. Instrument : HPLC
 Injection Date : 12/4/2017 12:22:28 PM
 Seq. Line : 7
 Location : Vial164
 Inj : 1
 Inj Volume : 5.000 µl
 Last changed : 12/4/2017 12:22:26 PM by SYSTEM
 Last changed : 12/4/2017 12:25:26 PM by SYSTEM
 (modified after loading)
 Additional Info : Peak(s) manually integrated



Area Percent Report

Sorted By : Signal
 Multiplier : 1.0000
 Dilution : 1.0000
 Use Multiplier & Dilution Factor with ISTDs

Signal: DAD1 F, Sig=210, 4 Res=055

Peak #	RetTime [min]	Type	Width [min]	Area [mAU*s]	Height [mAU]	Area %
1	30.861	FM	0.2363	54.53726	3.16296	0.3487
2	31.736	MF	0.1649	32.78434	2.06097	0.2693
3	32.194	FM	0.2275	1.20090e4	927.61294	98.2692
4	33.148	MM	0.2392	129.89628	5.99266	1.0128
Totals :				1.22205e4	931.22954	

* If you have any comments and suggestions, please contact us by sales@amadischem.com