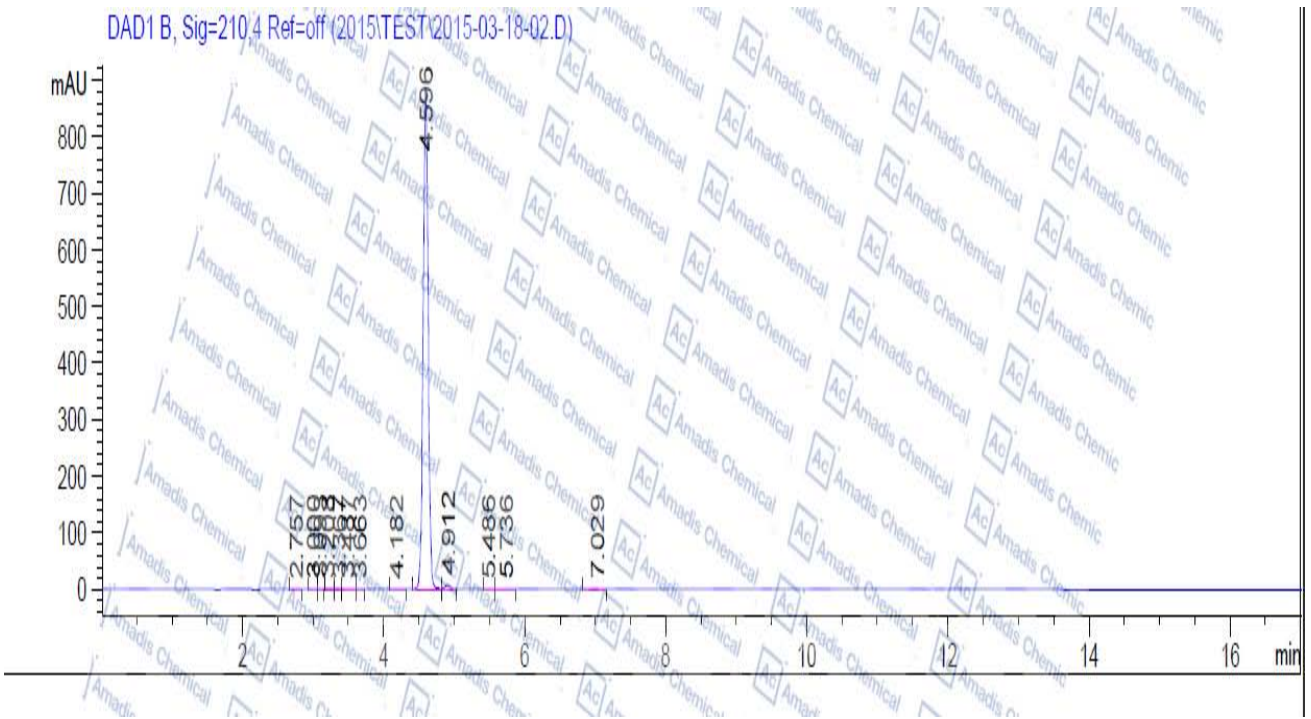


HPLC of 14347-05-8



峰 #	保留时间 [min]	类型	峰宽 [min]	峰面积 [mAU*s]	峰高 [mAU]	峰面积 %
1	2.757	MM R	0.0642	1.30436	3.38482e-1	0.0296
2	3.000	MF R	0.0738	7.58377e-1	1.71305e-1	0.0172
3	3.093	FM R	0.0649	2.59777e-1	6.67292e-2	5.896e-3
4	3.208	MM R	0.0619	2.66304e-1	7.17118e-2	6.045e-3
5	3.367	MF R	0.0646	3.81513e-1	9.83874e-2	8.660e-3
6	3.487	FM R	0.1225	1.65556	2.25288e-1	0.0376
7	3.663	MM R	0.0576	5.33605e-1	1.54359e-1	0.0121
8	4.182	MM R	0.0746	4.19051	9.35662e-1	0.0951
9	4.596	MM R	0.0820	4358.99414	886.19379	98.9397
10	4.912	MM R	0.0804	35.82488	7.42805	0.8131
11	5.486	MM R	0.0881	1.18916e-1	2.24974e-2	2.699e-3
12	5.736	MM R	0.1495	5.47023e-1	6.09666e-2	0.0124
13	7.029	MM R	0.1588	8.73913e-1	9.17405e-2	0.0198

* If you have any comments and suggestions, please contact us by sales@amadischem.com