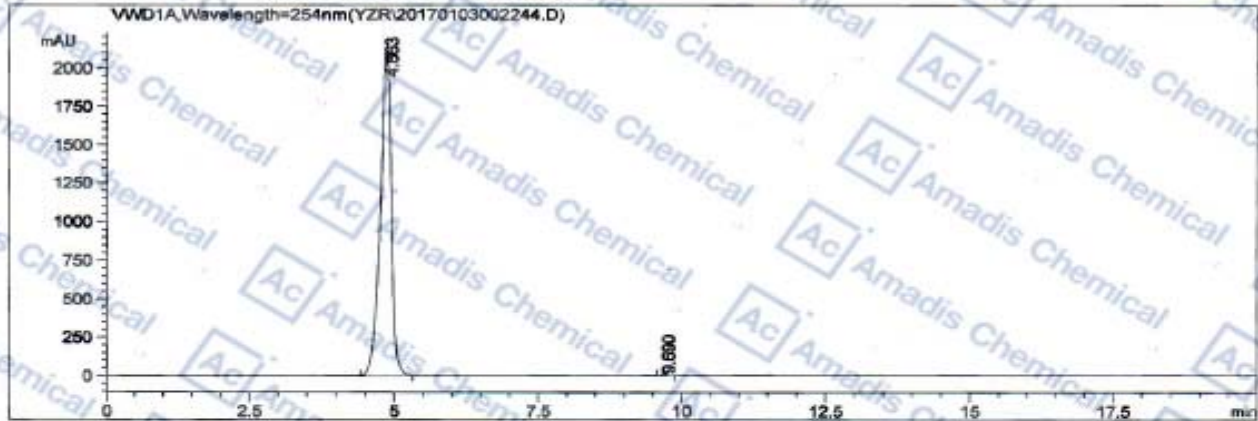


## HPLC of 63636-89-5

Acq. Instrument : 仪器 1 Location : Vial 1  
 Injection Date : 16/10/2017 14:51:30  
 Acq. Method : C:\CHEM32\1\METHODS\DEF\_LC.M  
 Last changed : 16/10/2017 15:07:39 by YZR  
 (modified after loading)  
 Analysis Method : C:\CHEM32\1\METHODS\DEF\_LC.M  
 Last changed : 16/10/2017 14:48:32 by YZR  
 (modified after loading)



-----  
 Area Percent Report  
 -----

Sorted By : Signal  
 Multiplier: : 1.0000  
 Dilution: : 1.0000  
 Use Multiplier & Dilution Factor with ISTDs

Signal 1: VWD1 A, Wavelength=254 nm

Peak #	RetTime [min]	Type	Width [min]	Area mAU *s	Height [mAU]	Area %
1	4.863	BB	0.1960	2.76804e4	2120.69360	99.7563
2	9.690	BB	0.1007	67.60852	10.80418	0.2437

Totals : 2.77480e4 2131.49778

\*\*\* End of Report \*\*\*

\* If you have any comments and suggestions, please contact us by [sales@amadischem.com](mailto:sales@amadischem.com)