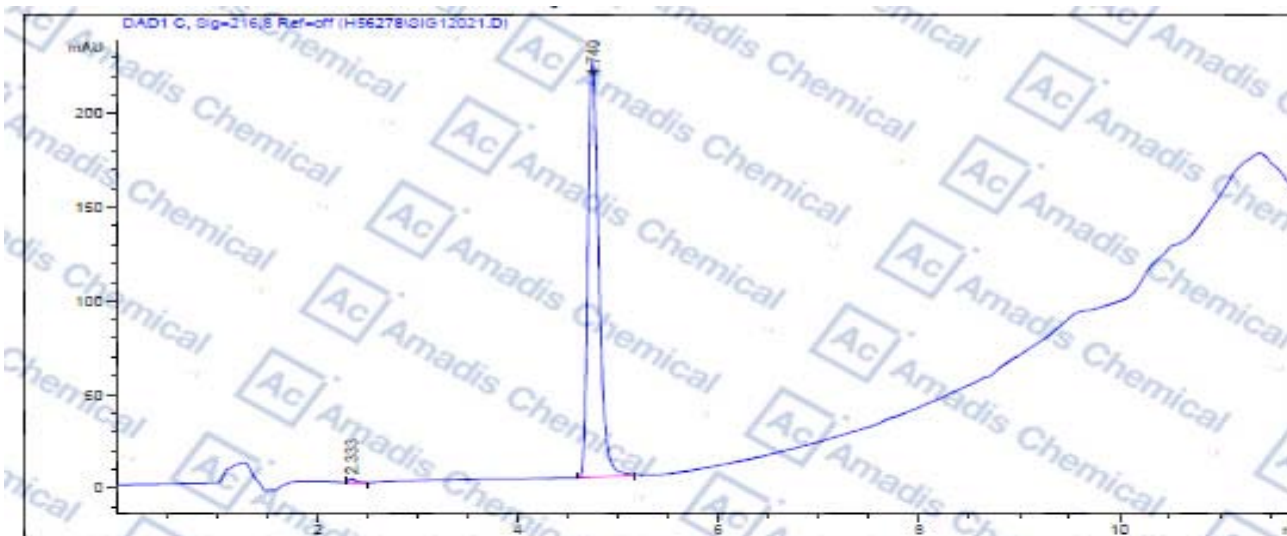


HPLC of 51779-32-9



=====
Area Percent Report
 =====

Sorted By : Signal
 Multiplier: 1.0000
 Dilution: 1.0000
 Use Multiplier & Dilution Factor with ISTDs

Signal 1: DAD1 C, Sig=216,8 Ref=off

| Peak # | RetTime [min] | Type | Width [min] | Area [mAU*s] | Height [mAU] | Area % |
|----------|---------------|------|-------------|--------------|--------------|---------|
| 1 | 2.333 | MM P | 0.0648 | 11.92509 | 2.34418 | 0.7023 |
| 2 | 4.740 | BB | 0.1164 | 1686.01660 | 222.59216 | 99.2977 |
| Totals : | | | | 1697.94169 | 224.93635 | |

* If you have any comments and suggestions, please contact us by sales@amadischem.com