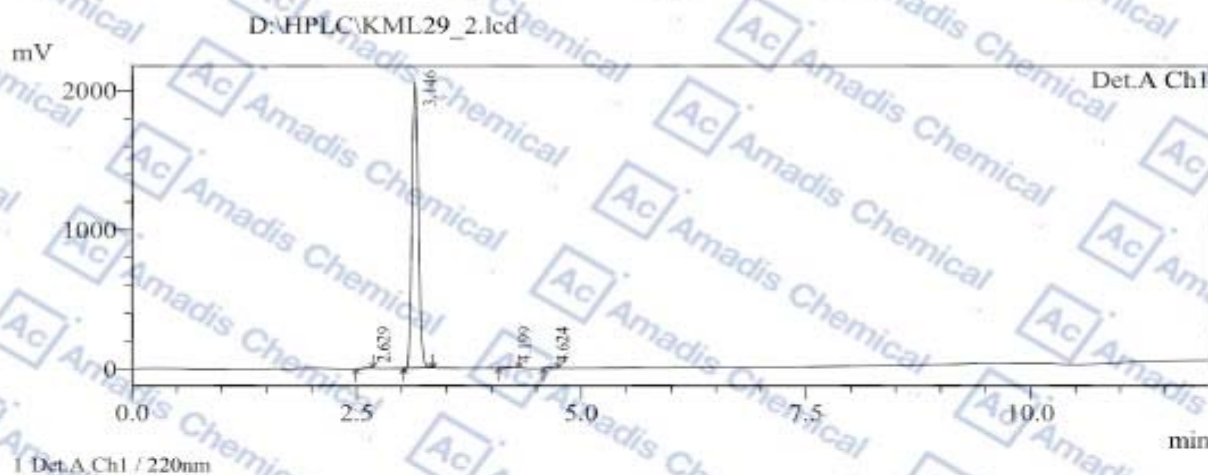


HPLC of 1380424-42-9

Sample Name : KML29
 Sample ID : A
 Tray# : 2
 Vial# : 1
 Injection Volume : 1 uL
 Data Filename : A_2.lcd
 Method Filename : 10-100-230nm.lcm
 Date Acquired : 2017-10-24 14:14:43
 Description : Method: 10-100
 Column: Gemini
 Mobile phase: H2O(0.05%TFA)-ACN(0.05%TFA) ACN from 10% to 100% over 8min
 hold 2 min.
 Oven: 45C
 Flow rate: 1.2mL/min

<Chromatogram>



<Result>

PeakTable

Peak#	Ret. Time	Area	Height	Area %
1	2.629	30043	7741	0.294
2	3.146	10145510	2054894	99.218
3	4.199	23297	8131	0.228
4	4.624	26609	6608	0.260
Total		10225459	2077375	100.000

* If you have any comments and suggestions, please contact us by sales@amadischem.com