

HPLC of 54965-24-1

Acq. Instrument : Instrument_1 Location : Vial 26

Injection Date : 9/9/2017 2:38:21 PM

Inj Volume : 1.0 µl

Acq. Method : C:\CHEM32\1\METHODS\LONG METHOD\10-80-25MIN-AB.M

Last changed : 9/9/2017 2:30:21 PM

(modified after loading)

Analysis Method : C:\CHEM32\1\DATA\1401\JD-0109-A6.D\DA.M (10-80-25MIN-AB.M, From Data File)

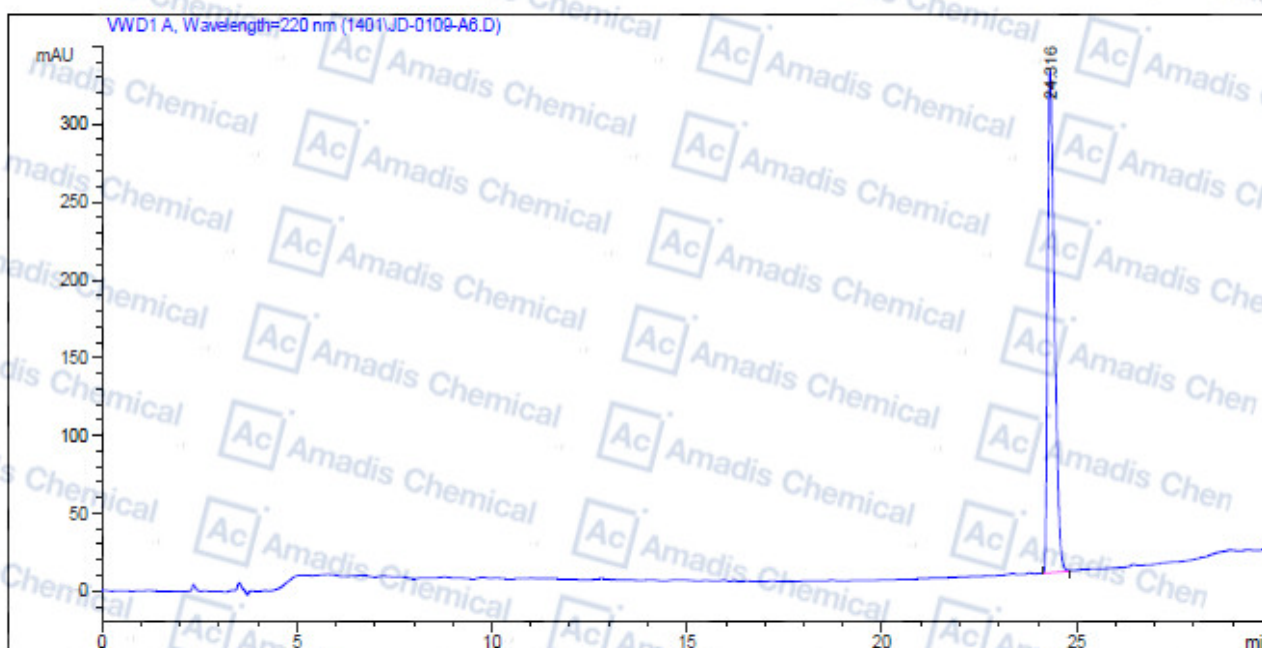
Last changed : 9/9/2017 3:12:33 PM

(modified after loading)

Method Info A:0.04%TFA H2O

B:0.04%TFA ACN

Column:Alltima C18, 4.6*250mm, 5µm



=====
 Area Percent Report
 =====

Sorted By : Signal
 Multiplier: : 1.0000
 Dilution: : 1.0000
 Use Multiplier & Dilution Factor with ISTDs

Signal 1: VWD1 A, Wavelength=220 nm

Peak #	RetTime [min]	Type	Width [min]	Area mAU*s	Height [mAU]	Area %
1	24.316	BB	0.1894	3938.08081	321.63498	100.0000

Totals : 3938.08081 321.63498



** if you have any comments and suggestions, please contact us by sales@amadischem.com*