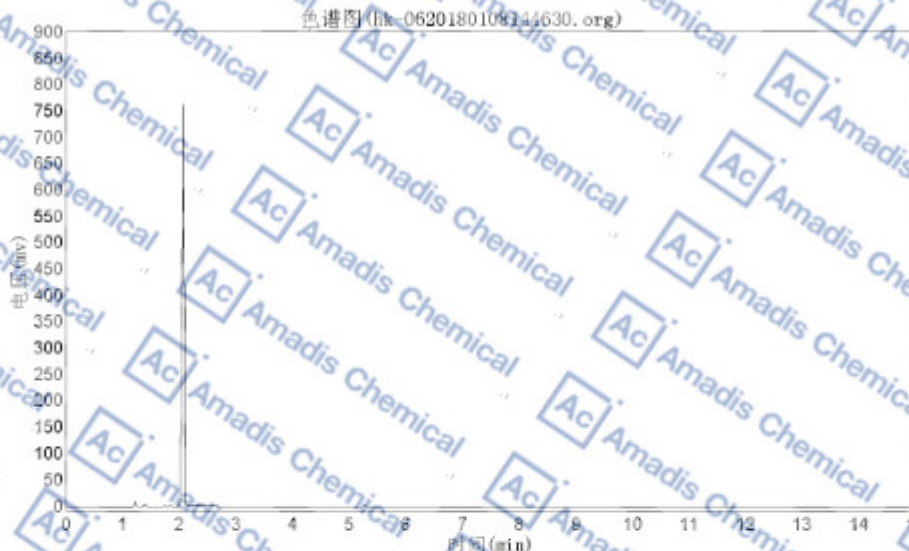


GC of 1126-09-6

实验时间: 2018-01-08 15:03:08
 谱图文件: E:\气相检测样品\hk-06\hk-0620180108144630.org
 实验者:
 报告时间: 2018-01-09 15:48:52
 积分方法: 面积归一法



分析结果表

峰号	峰名	保留时间	峰高	峰面积	含量
1		1.217	8298.944	11603.943	0.6144
2		1.317	38.200	48.300	0.0026
3		1.373	3312.853	1375.896	0.0728
4		1.378	4170.847	5022.554	0.2658
5		1.585	39.723	146.941	0.0078
6		1.740	218.636	549.507	0.0291
7		1.833	427.574	922.555	0.0488
8		2.073	764197.625	1859161.750	98.3890
9		2.328	3301.287	7443.422	0.3939
10		2.483	115.194	632.890	0.0335
11		2.570	480.142	1961.255	0.1038
12		5.262	154.525	765.689	0.0388
总计			784755.550	1889602.402	100.0000

* If you have any comments and suggestions, please contact us by sales@amadischem.com