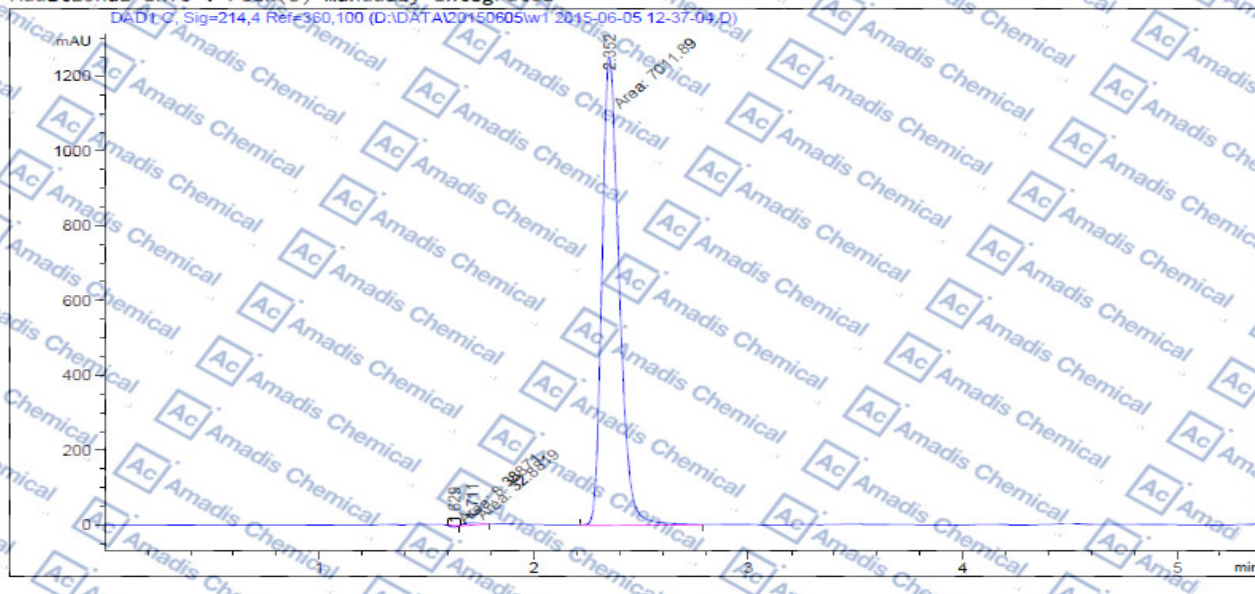


HPLC of 1175298-09-5

Injection Date : 6/5/2015 12:37:37 PM
 Acq. Method : 407-20150527.M
 Analysis Method : D:\Methods\def_LC.M
 Last changed : 2/13/2014 11:27:44 PM by SYSTEM
 Additional Info : Peak(s) manually integrated



=====
 Area Percent Report
 =====

Sorted By : Signal
 Multiplier : 1.0000
 Dilution : 1.0000
 Use Multiplier & Dilution Factor with ISTDs

Signal 1: DAD1 C, Sig=214,4 Ref=360,100

Peak #	RetTime [min]	Type	Width [min]	Area [mAU*s]	Height [mAU]	Area %
1	1.629	MM N	0.0324	8.38871	4.31258	0.1189
2	1.711	MM	0.0876	32.88194	6.25378	0.4662
3	2.352	MM	0.0928	7011.89307	1259.34314	99.4149

Totals : 7053.16371 1269.90950

=====
 *** End of Report ***
 =====

* If you have any comments and suggestions, please contact us by sales@amadischem.com