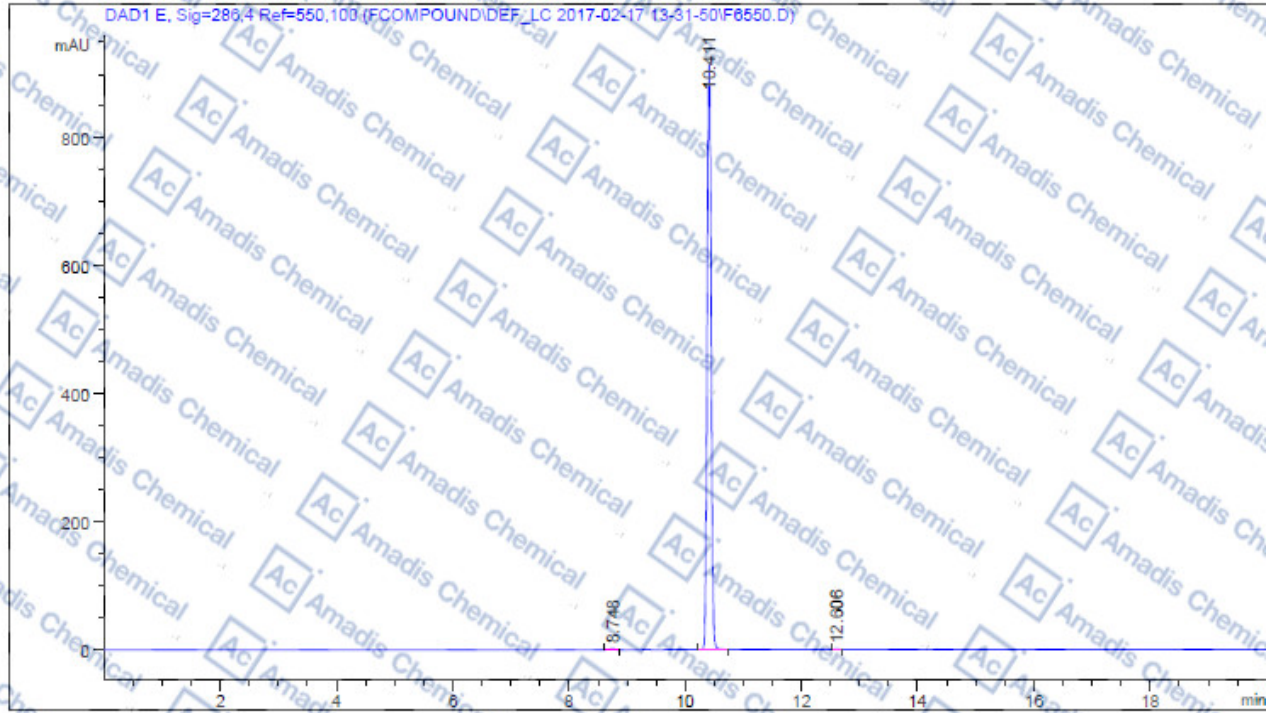


HPLC OF 1297538-32-9

Acq. Operator : SYSTEM Seq. Line : 2
 Acq. Instrument : 12601c Location : Vial 48
 Injection Date : 02/17/2017 1:54:44 PM Inj : 1
 Inj Volume : 2.000 µl
 Different Inj Volume from Sample Entry! Actual Inj Volume : 1.500 µl
 Method : C:\CHEM32\1\DATA\FCOMPOUND\DEF_LC_2017-02-17_13-31-50\TEST12.M (Sequence
 Method)
 Last changed : 02/17/2017 1:31:59 PM by SYSTEM



Area Percent Report

Sorted By : Signal
 Multiplier : 1.0000
 Dilution : 1.0000
 Use Multiplier & Dilution Factor with ISTDs

Signal 1: DAD1 E, Sig=286,4 Ref=550,100

Peak #	RetTime [min]	Type	Width [min]	Area [mAU*s]	Height [mAU]	Area %
1	8.748	BB	0.0732	6.71697	1.36815	0.1503
2	10.411	BB	0.0779	4457.01660	914.47595	99.7266
3	12.606	BB	0.0589	5.50056	1.44477	0.1231
Totals :				4469.23413	917.30388	

* If you have any comments and suggestions, please contact us by sales@amadischem.com