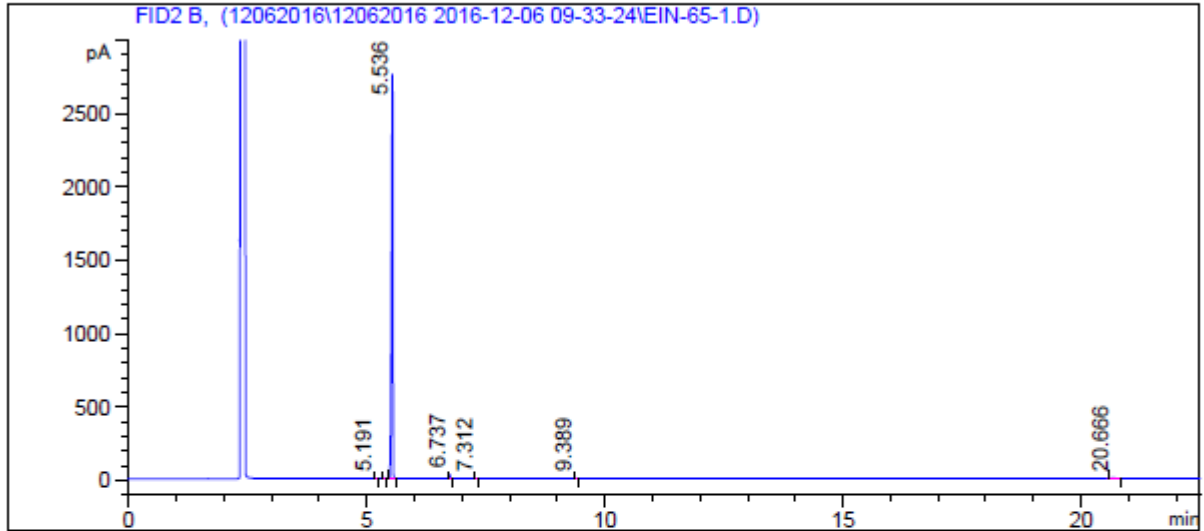


GC of 5771-32-4

```

Sample Name       : EIN-65-1                      Seq Line       :      2
Acq Operator     : QC-XYZ                          Location      : 样品瓶 102
Injection Date    : 2016/12/6 10:04:49            Inj. Vol.     :      1ul
Acq. Method      : D:\DATA\GC-R_DATA\12062016\12062016 2016-12-06 09-33-24\GC-
                  DB5 (DP) -A.M
    
```



Customized Report: 简短报告

Signal 1 : FID2 B,

Peak #	RT [min]	Symmetr	Type	Height	Width [min]	峰面积	峰面积 %
1	5.191	0.774	BB	1.575	0.025	2.514	0.046
2	5.373	0.594	BB	5.536	0.026	9.401	0.171
3	5.536	1.993	BB	2.757e3	0.029	5415.267	98.489
4	6.737	0.830	BB	30.006	0.024	45.808	0.833
5	7.312	0.978	BB	1.442	0.023	2.139	0.039
6	9.389	0.706	BB	3.398	0.027	6.069	0.110
7	20.666	0.690	MM	3.236	0.088	17.155	0.312

*** End of Report ***

* If you have any comments and suggestions, please contact us by sales@amadischem.com