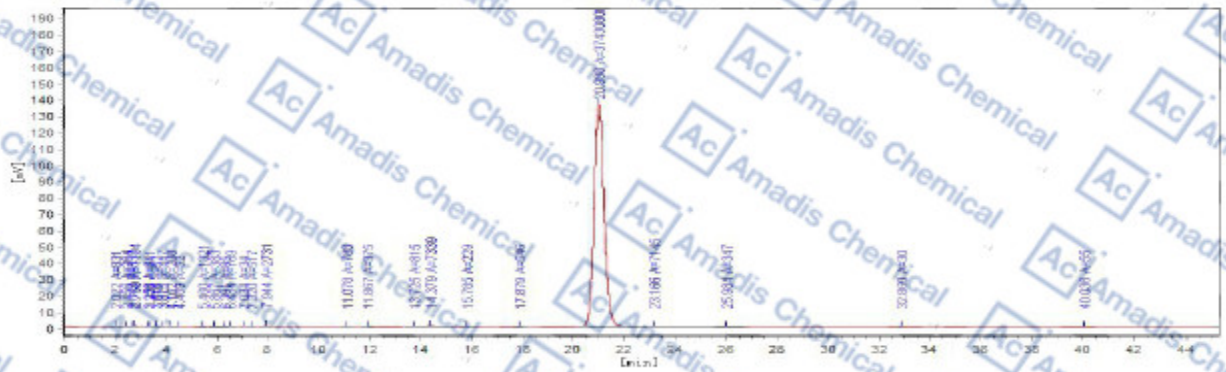


HPLC of 39432-56-9



峰序	组分名	保留时间[min]	峰高[uV]	峰面积[uV*s]	峰面积%	含量[%]	峰类型
1		2.022	127	831	0.02203	0.00000	BB
2		2.456	36	264	0.00699	0.00000	BV
3		2.645	75	359	0.00951	0.00000	VV
4		2.769	245	1194	0.03166	0.00000	VB
5		3.258	26	64	0.00171	0.00000	BX
6		3.326	100	641	0.01699	0.00000	XB
7		3.616	12	52	0.00137	0.00000	BB
8		3.875	68	447	0.01185	0.00000	BB
9		4.162	18	208	0.00550	0.00000	BV
10		4.489	14	52	0.00139	0.00000	VB
11		5.460	196	1321	0.03505	0.00000	BB
12		5.867	42	383	0.01016	0.00000	BB
13		6.301	16	85	0.00227	0.00000	BV
14		6.484	86	769	0.02039	0.00000	VB
15		7.034	8	34	0.00091	0.00000	BB
16		7.320	55	517	0.01372	0.00000	BB
17		7.944	272	2731	0.07243	0.00000	BB
18		11.078	63	788	0.02091	0.00000	BB
19		11.867	23	375	0.00996	0.00000	BB
20		13.725	43	815	0.02160	0.00000	BV
21		14.379	374	7339	0.19463	0.00000	VP
22		15.785	17	229	0.00607	0.00000	PB
23		17.879	35	546	0.01448	0.00000	BB
24		20.988	136762	3743080	99.26745	0.00000	BV
25		23.166	148	7145	0.18948	0.00000	VV
26		25.984	15	347	0.00921	0.00000	VB
27		32.860	7	30	0.00081	0.00000	BB
28		40.036	20	55	0.00146	0.00000	BB

* If you have any comments and suggestions, please contact us by sales@amadischem.com