

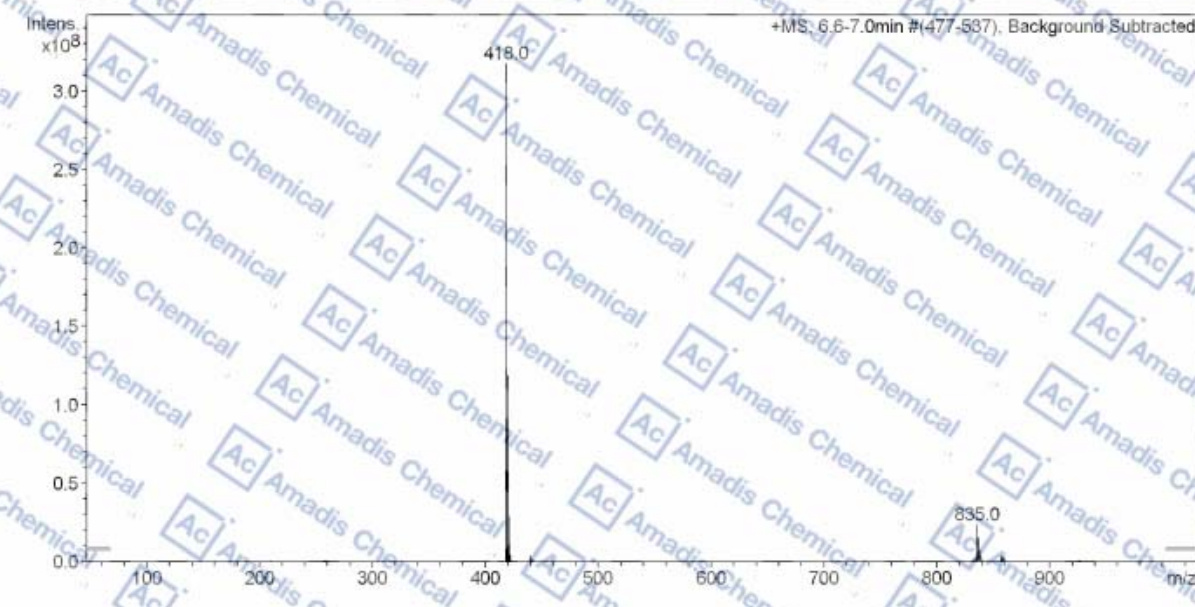
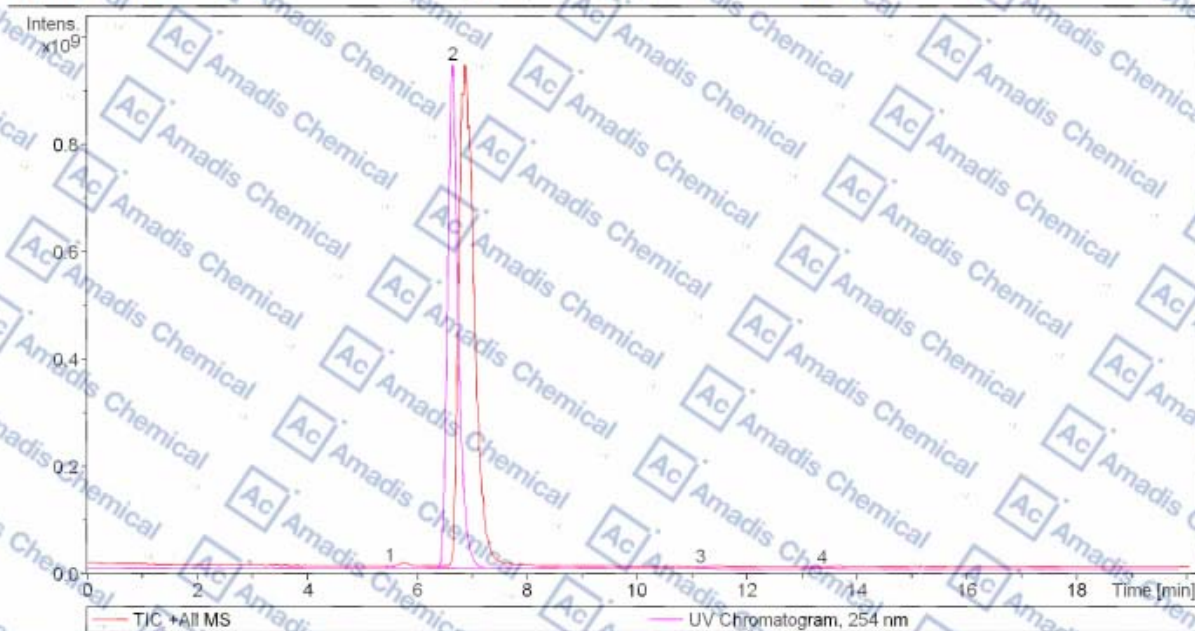
### LCMS of 1029044-16-3

Acquisition Date 10/25/2017 4:09:43 PM

Analysis Name D:\Data\test\1025\PLX3397\_44\_01\_244.d  
 Method 244.m  
 Sample Name PLX3397  
 Comment

**Acquisition Parameter**

Ion Source Type	ESI	Ion Polarity	Positive	Alternating Ion Polarity	on
Mass Range Mode	UltraScan	Scan Begin	70 m/z	Scan End	1000 m/z
Capillary Exit	140.0 V	Averages	n/a	Trap Drive	80.7
Accumulation Time	3905 $\mu$ s		5 Spectra	Auto MS/MS	off



\* If you have any comments and suggestions, please contact us by [sales@amadischem.com](mailto:sales@amadischem.com)