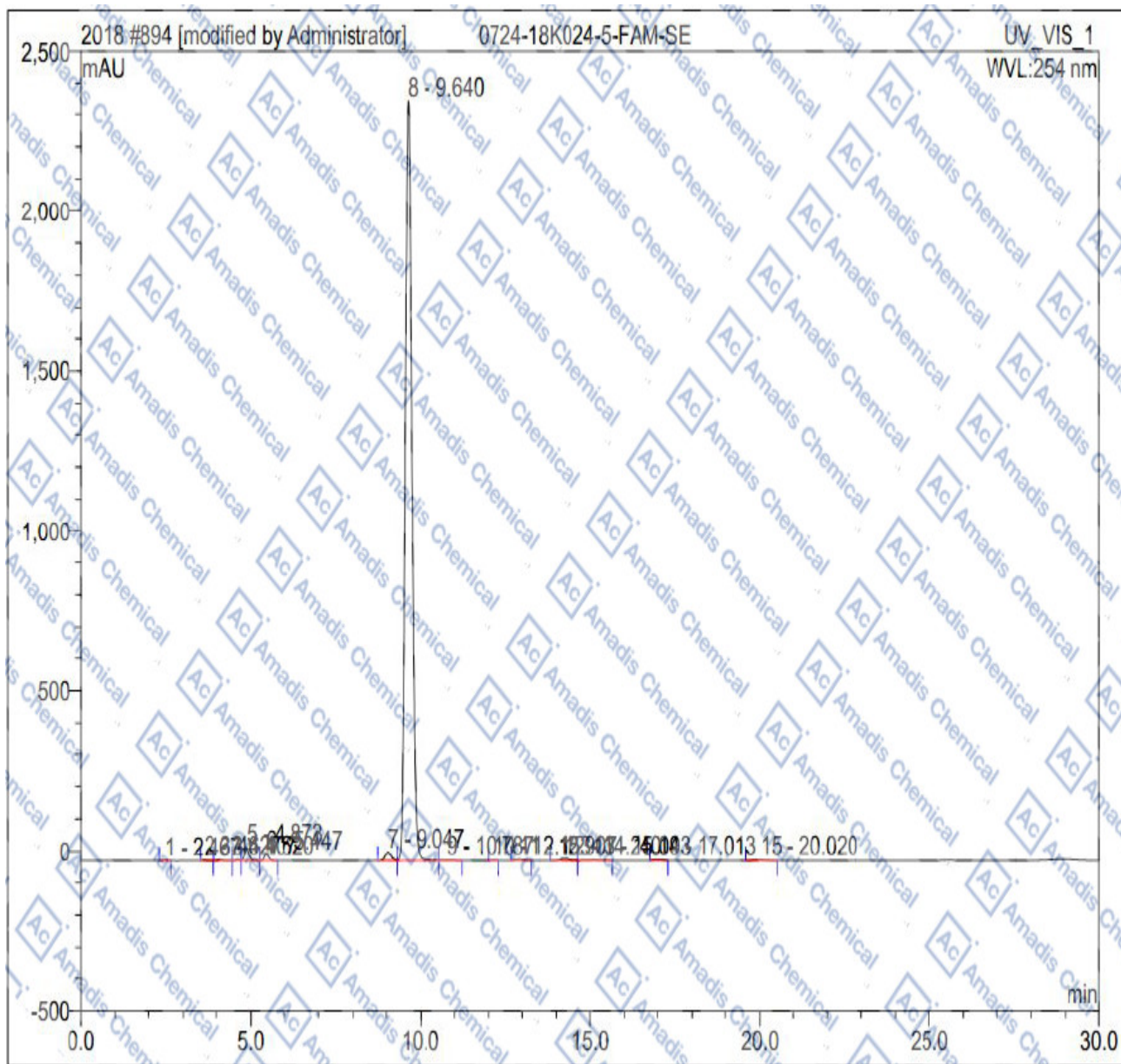


HPLC of 92557-80-7



No.	Ret.Time min	Peak Name	Height mAU	Area mAU*min	Rel.Area %	Amount	Type
1	2.47	n.a.	1.081	0.166	0.03	n.a.	BMB
2	3.63	n.a.	1.385	0.188	0.03	n.a.	BMB
3	4.11	n.a.	3.390	0.452	0.08	n.a.	BM
4	4.62	n.a.	3.633	0.476	0.09	n.a.	M
5	4.87	n.a.	43.728	6.267	1.14	n.a.	MB
6	5.45	n.a.	20.406	3.003	0.55	n.a.	BMB
7	9.05	n.a.	27.545	5.602	1.02	n.a.	BM
8	9.64	n.a.	2376.438	528.992	96.11	n.a.	M
9	10.79	n.a.	1.006	0.315	0.06	n.a.	MB
10	12.15	n.a.	0.706	0.132	0.02	n.a.	BMB
11	12.91	n.a.	3.200	0.859	0.16	n.a.	BMB
12	14.24	n.a.	5.353	1.708	0.31	n.a.	BM
13	15.09	n.a.	1.646	0.613	0.11	n.a.	MB
14	17.01	n.a.	2.368	0.719	0.13	n.a.	BM
15	20.02	n.a.	2.072	0.888	0.16	n.a.	BMB
Total:			2493.957	550.379	100.00	0.000	

* If you have any comments and suggestions, please contact us by sales@amadischem.com