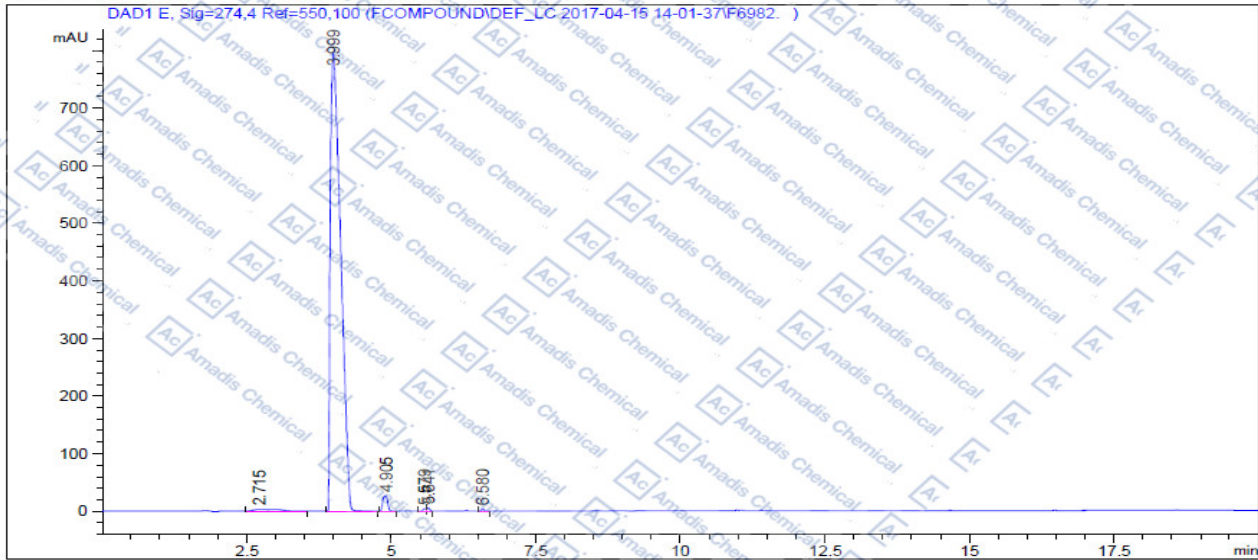


HPLC of 361442-04-8

Acq. Operator : SYSTEM Seq. Line : 3
 Acq. Instrument : 12601c Location : Vial 22
 Injection Date : 4/15/2017 2:47:33 PM Inj : 1
 Inj Volume : 2,000 µl
 Different Inj Volume from Sample Entry! Actual Inj Volume : 30,000 µl
 Method : C:\CHEMS2\1\DATA\FCOMPOUND\DEF_LC_2017-04-15_14-01-37\TEST12.M (Sequence Method)
 Last changed : 4/15/2017 2:01:45 PM by SYSTEM
 Additional Info : Peak(s) manually integrated



Area Percent Report

Sorted By : Signal
 Multiplier : 1.0000
 Dilution : 1.0000
 Use Multiplier & Dilution Factor with ISTDs

Signal 1: DAD1 E, Sig=274,4 Ref=550,100

Peak #	RetTime [min]	Type	Width [min]	Area [mAU*s]	Height [mAU]	Area %
1	2.715	BB	0.3781	96.37177	3.00104	0.9520
2	3.999	BB	0.2031	9829.71875	795.73468	97.568
3	4.905	BB	0.0808	152.33769	26.62380	1.5049
4	5.579	BV	0.0452	13.17995	4.49330	0.1302
5	5.641	VB	0.0490	18.88007	5.94814	0.1865
6	6.580	BB	0.0428	12.09942	4.37116	0.1195

Totals : 1.01226e4 840.17211

*If you have any comments and suggestions, please contact us by sales@amadischem.com