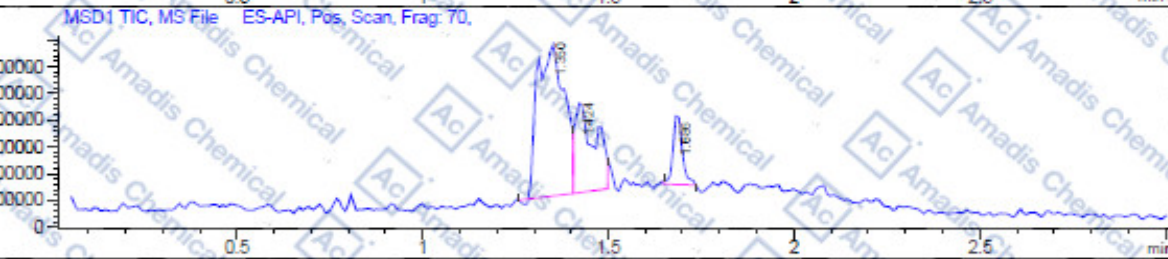
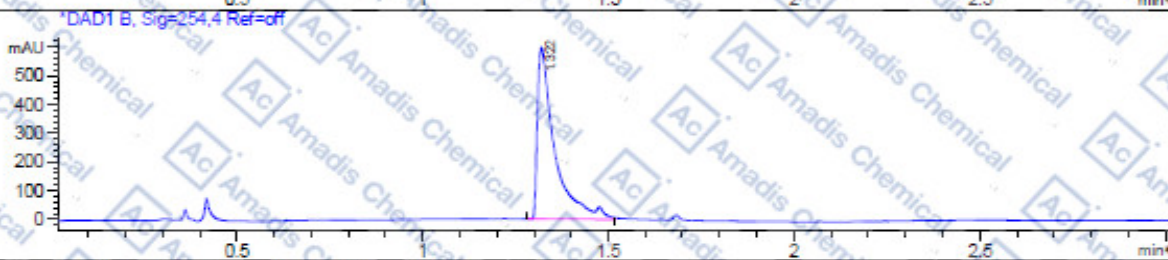
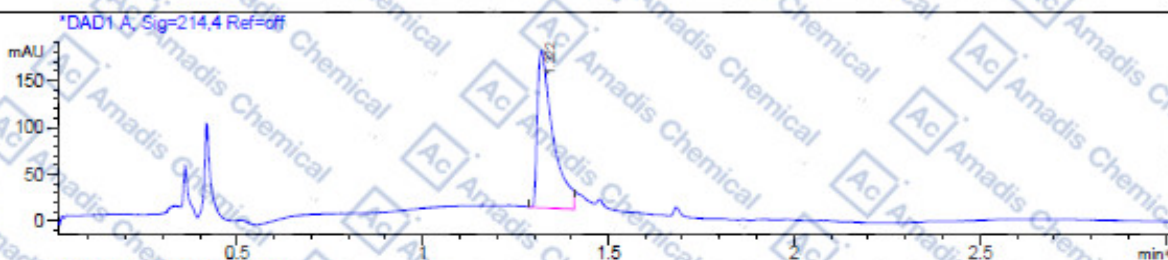


## HPLC of 129830-38-2

Injection Date : 6 Jul 18  
 Sample Name : 129830-38-2

Method Info : Mobile Phase: A:Water(10mM NH4HCO3) B:ACN  
 Gradient: 5% increase to 95%B within 1.4min,  
 95%B for 1.6min,back to 5%B within 0.01min  
 Flow Rate: 1.8.0ml/min  
 Column: XBridge C18,4.6\*50mm,3.5um  
 Column Temperature: 40 C  
 Detection:UV(214,4nm) and MS(ESI,Neg mode,133 to 1000 amu)

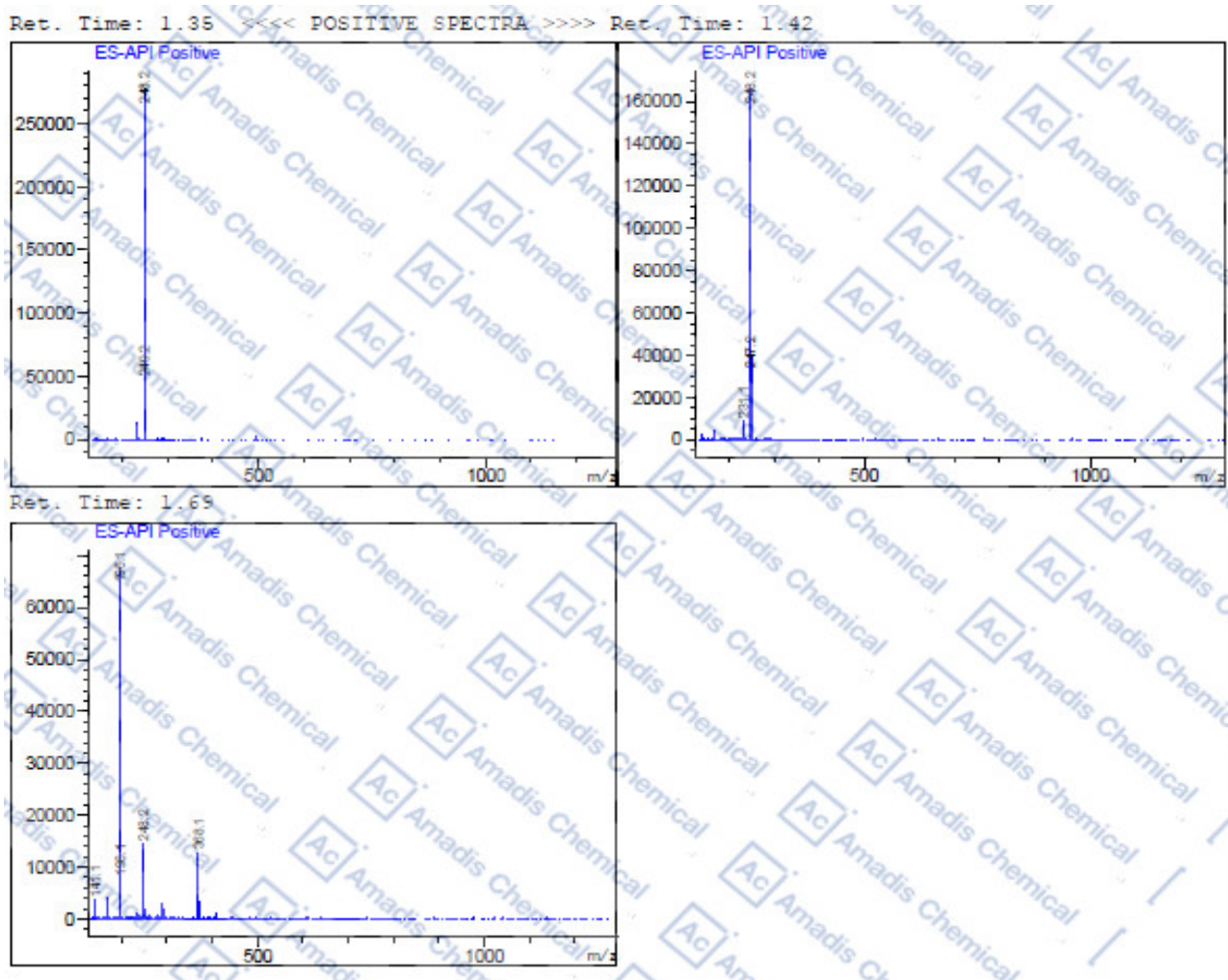


Integration Results for DAD1 A, Sig=214.4 Ref=off

RetTim	Width	Area	Height	Area%
1.32	0.04	486.14	164.60	100.00

Integration Results for DAD1 B, Sig=254.4 Ref=off

RetTim	Width	Area	Height	Area%
1.32	0.05	1527.90	587.63	100.00



\* If you have any comments and suggestions, please contact us by [sales@amadischem.com](mailto:sales@amadischem.com)