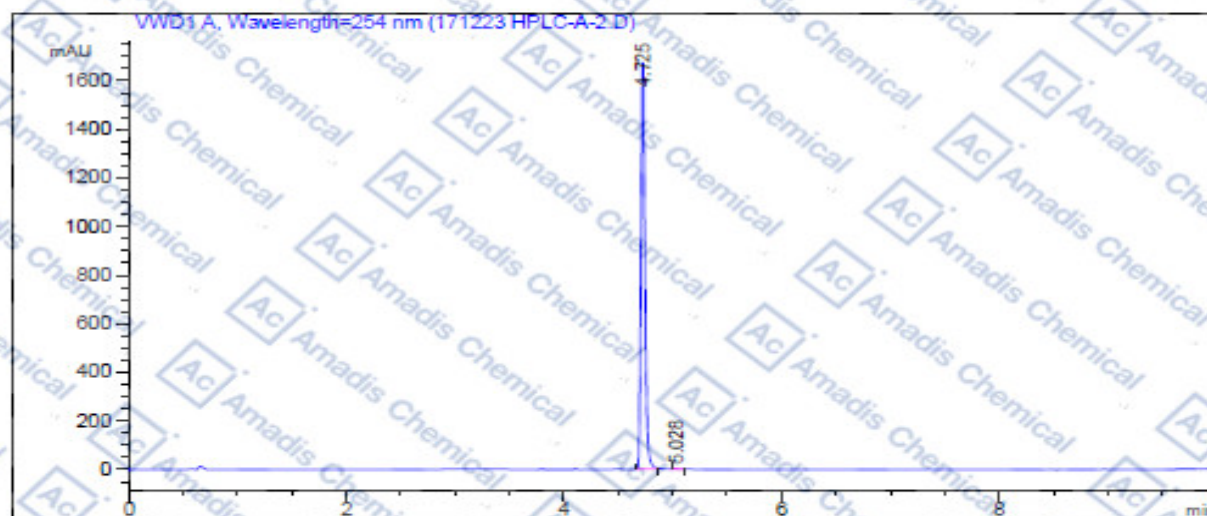


### HPLC of 888216-25-9

```

Acq. Operator   : 1
Acq. Instrument : Instrument 1
Injection Date  : 12/23/2017 11:27:42 AM
Acq. Method     : D:\CHEM32\
Last changed   : 12/24/2017 8:15:27 PM by 1
Analysis Method : D:\CHEM32\
Last changed   : 12/23/2017 11:38:00 AM by 1
                (modified after loading)
Sample Info     : A = ACN, B = 0.1% H3PO4/H2O] 10-95% A/B 3.5 min, 95% A/
                B 4.5 min, 95-10% A/B 1 min, 10% A/B 1 min; Athena C18
                (3 µm, 2.1 mm x 100 mm); Flow: 0.4 ml/min
    
```



=====  
**Area Percent Report**  
 =====

```

Sorted By      : Signal
Multiplier:    : 1.0000
Dilution:      : 1.0000
Use Multiplier & Dilution Factor with ISTDs
    
```

Signal 1: VWD1 A, Wavelength=254 nm

Peak #	RetTime [min]	Type	Width [min]	Area mAU*s	Height [mAU]	Area %
1	4.725	BB	0.0396	4326.03564	1672.45337	99.8056
2	5.028	BB	0.0407	8.42534	3.25643	0.1944
Totals				4334.46098	1675.70979	

=====  
 \*\*\* End of Report \*\*\*  
 =====

\*If you have any comments and suggestions, please contact us by [sales@amadischem.com](mailto:sales@amadischem.com)