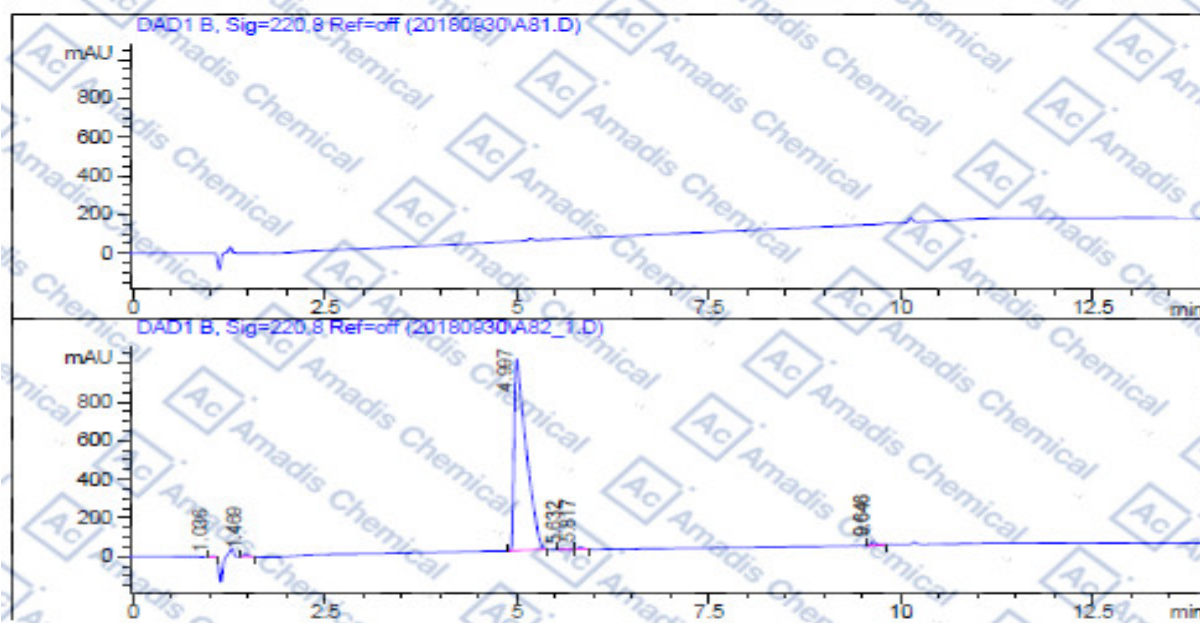


HPLC of 884497-46-5

```

Data file : D:\LCMS-1\20180930\A82 1.D
Sample Name: 0159-167-25
-----
Injection Date : Sun, 30. Sep. 2018
Sample Name : 0159-167-25
Acq Operator : LXL
Seq Line : 4
Location : Vial 82
Inj. No. : 1
Inj. Vol. : 15 µl
Acq. Method : 10-90 01.M
Analysis Method : C:\HPCHEM\1\METHODS\10-90 01.M
Last Changed : Sun, 30. Sep. 2018, 10:31:11 am
(modified after loading)
t=40c; Column:4.6cm*100mm, 3.5µm, ECLIPSE PLUS C18
  
```



Customized Report: Short

```

Sorted By Signal
Calib. Data Modified : Tue, 7. Mar. 2017, 11:32:28 am
Multiplier : 1.000000
Dilution : 1.000000
Uncalibrated Peaks : not reported
  
```

Signal 1: DAD1 B, Sig=220,8 Ref=off

Peak #	RT [min]	Type	Width [min]	Area	Area %
1	1.036	MM R	0.052	11.973	0.108
2	1.469	MM R	0.061	53.785	0.486
3	4.997	MM R	0.180	10738.916	97.037
4	5.632	MM R	0.101	20.202	0.183
5	5.817	MM R	0.083	75.632	0.683
6	9.646	MM R	0.073	83.173	0.752
7	9.646	MM R	0.073	83.173	0.752

*** End of Report ***

*If you have any comments and suggestions, please contact us by sales@amadischem.com